

# Dortmund Data Bank (DDB) Configuration

DDBConfig

**DDBSP** - Dortmund Data Bank Software Package



**DDBST**

DORTMUND DATA BANK  
SOFTWARE & SEPARATION  
TECHNOLOGY

Marie-Curie-Straße 10

D-26129 Oldenburg

Tel.: +49 441 361819 0

Fax: +49 441 361819 10

E-Mail: [support@ddbst.com](mailto:support@ddbst.com)

Web: [www.ddbst.com](http://www.ddbst.com)

## Contents

Introduction.....	3
Note on DDB Configuration Change in DDBSP 2008.....	4
DDB Configuration.....	4
The Tool Bar.....	5
Global Configuration.....	6
Modify Settings.....	6
Saved Configurations.....	7
File Redirections.....	7
License Server.....	9
Updates.....	9

## Introduction

The “Dortmund Data Bank” is a compilation of several independent databank files and programs connected together by their location. The locations are actually folders where all files are installed during the setup process.

The DDB database management supports currently two distinct databank folders which are equivalent to two databank systems:

- The “public” databanks  
These databanks are created and distributed by DDBST GmbH once a year at spring time.
- The “private” databanks  
These databanks are created and managed by the database customers and are used to store company data.

There are two additional folders which are used for the programs and a DDB internal clipboard. The DDB internal clipboard is a place for temporarily created files mainly used for transferring data to legacy FORTRAN programs and to store the result files.

The programs folder is not stored in the DDB configuration since it doesn’t matter for the working of the DDB system where the applications are stored if the installation has been performed properly.

The DDB configuration tool has been designed change the location of the three folders for the public and private databank as well as the clipboard folder and also allows setting several other options.

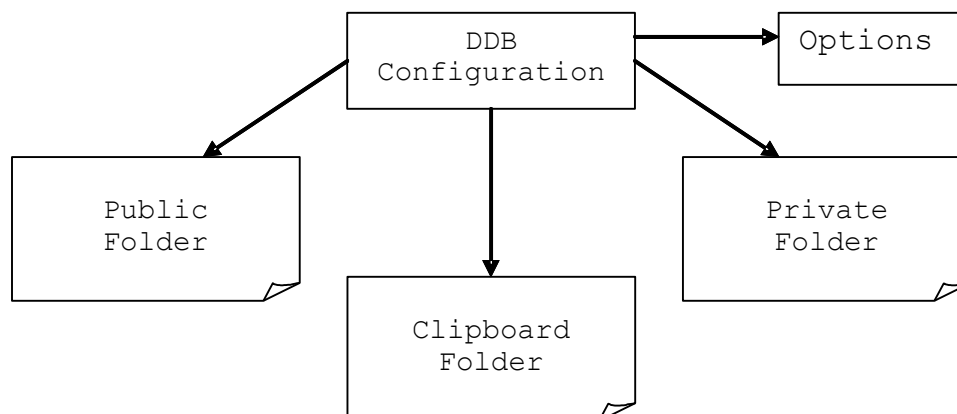


Figure 1

Figure 2 shows more detailed how the mixture data banks are organized within the DDB. Published experimental data refer to *components* (defining the system) and *literature data* (representing the paper containing the data). The DDB contains a component list as well as literature datasets. These are physically organized outside the actual mixture data banks.

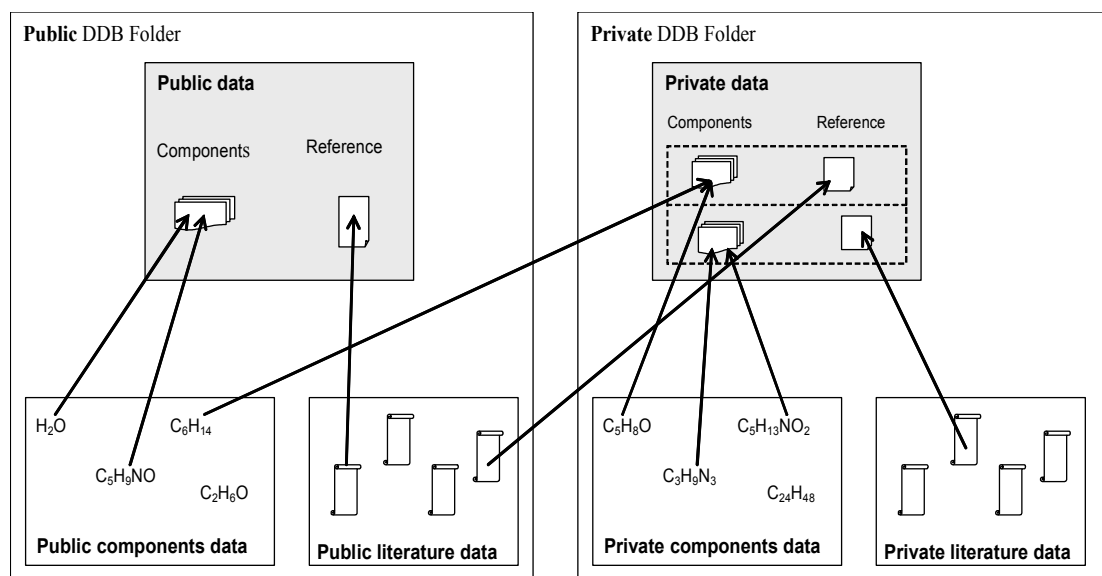


Figure 2

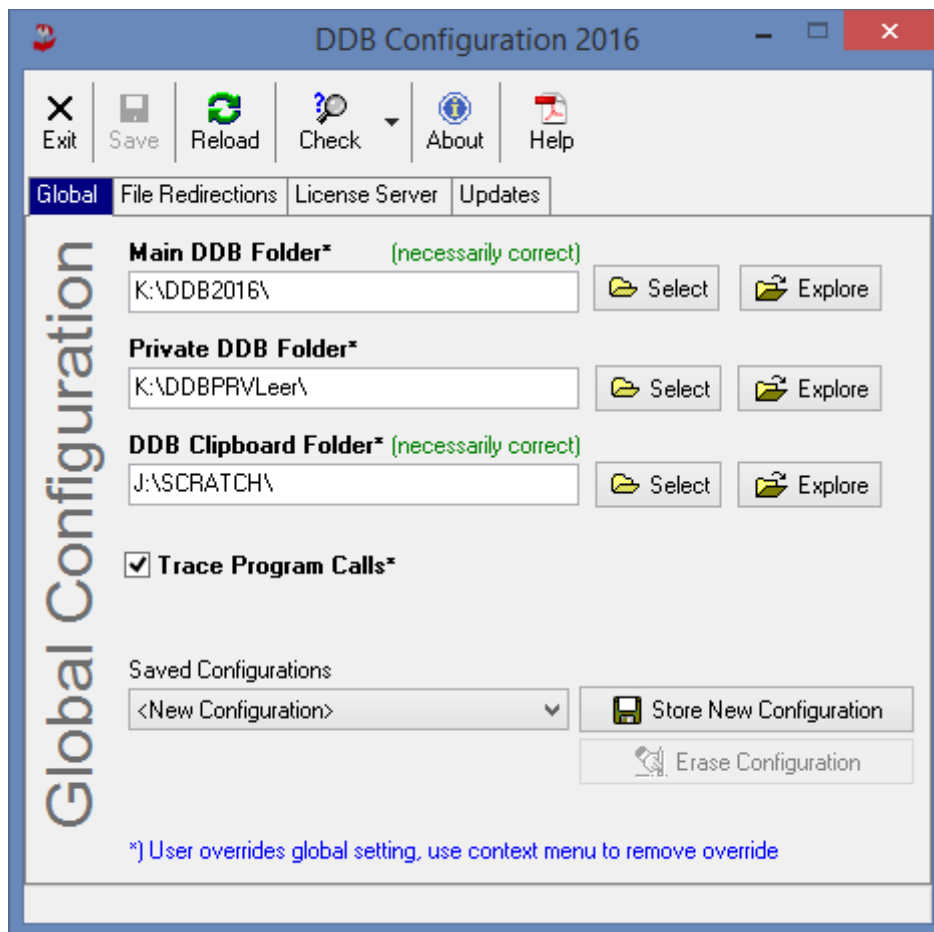
Experimental data provided by **DDBST** will refer to public components and public literature only. Customer's data may also refer to private (user-defined) components and private literature.

## Note on DDB Configuration Change in DDBSP 2008

Since DDBSP 2008 the DDB configuration is no longer written to C:\DDB.CFG or to the registry. Changing the configuration for this version will no longer change the configuration in other versions. So it is possible to have more than one version of DDBSP and DDB installed on the same system.

## DDB Configuration

The program *DDBConfig* is the configuration management program. It has the following pages:



1. *Global*: Configuration page for DDB folders (see section *Global Configuration* on page 6)
2. *File Redirections*: Temporarily replace DDB files by external files (see section *File Redirections* on page 7)
3. *License Server*: The license configuration has moved to a different program that can be started from here (see section *License Server* on page 9)
4. *Updates*: Check for available program updates (see section *Updates* on page 9)

## The Tool Bar



- **Exit**: Close the programs
- **Save**: Save settings
- **Reload**: Reload configuration (overwriting changes, or read changes made by other programs)
- **Check**: Check consistency and correctness of some settings
  - **Call Test DDB Installation**: Run a little test program to check if DDB/DDBSP is installed and configured correctly
  - **Open User Configuration Folder**: Start explorer with the folder where DDBSP configuration files

for the current user are stored

- **Open Global Configuration Folder:** Start explorer with the folder where the DDB configuration for all users are stored
- **About:** Display “About” dialog with copyright information
- **Help:** Show this text

## Global Configuration

### 1. “Main DDB Folder”

This folder contains all databanks delivered from DDBST GmbH. This folder is set up during the installation. Changing this folder is only useful if there’s another **complete** database folder available.

### 2. “Private DDB Folder”

This folder contains all databanks created and inserted by customers. The folder will be created during the installation but can be changed to another location without affecting the working of the DDB system.

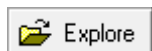
### 3. “DDB Clipboard Folder”

This folder contains temporarily created files used for the communication with legacy FORTRAN programs and result files created by these programs. It must be a valid folder otherwise most of the calculation, fit and predict cannot work. If the folder name is empty the Windows TEMP folder will be used (may be user specific).

### 4. “Trace Programs Calls”

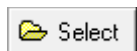
If this function is activated the DDB programs will write a list of the internal program calls to a file named “TRACE” in the DDB clipboard folder. This is only useful for debugging purposes.

The entries for the public database folder **must** point to a **complete** database folder and the clipboard folder **must** point to an existing and writable folder. Otherwise the DDB system cannot work properly.

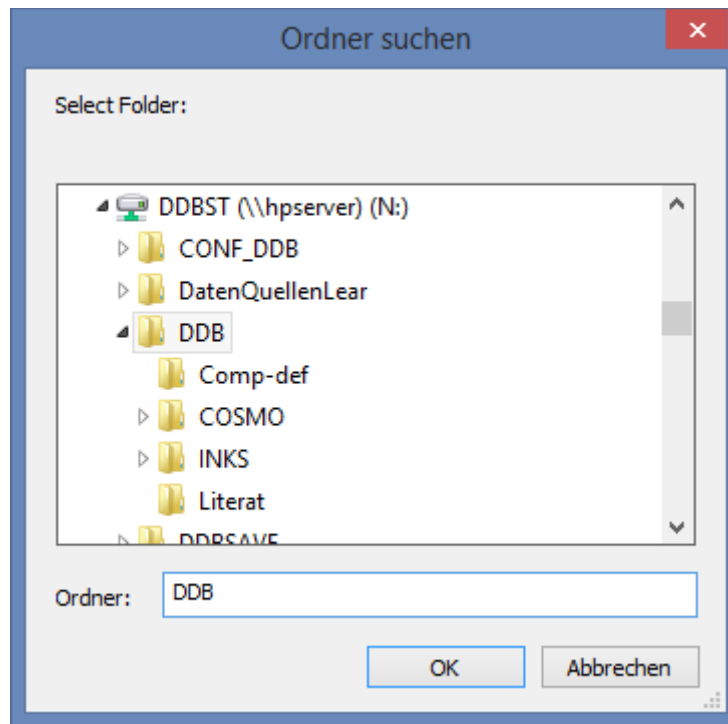


The *Explore* buttons can be used to open the *Main DDB Folder*, the *Private DDB Folder* or the *DDB Clipboard Folder* in the Explorer.

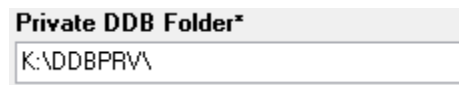
## Modify Settings



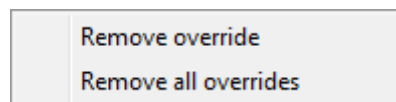
The path settings can be changed directly or by clicking the *Select* button which invokes the Windows folder selection routine.



If a user starts the DDB configuration program for the first time the DDB configuration common to all users (as specified at installation time) is displayed. It is no longer possible to modify the global DDB configuration with this program. Instead a modification will *override* the global configuration and will be visible for the current user only. An overwritten setting will be marked with star (“\*”) at the end of the caption.



To revert an overwritten setting to the global setting right-click on the caption and select *Remove override*. To revert all overwritten settings select *Remove all overrides*.



Click on the *Save* button in the tool bar to activate a DDB configuration.

### Saved Configurations

Use the *Store New Configuration* button to save the overwritten settings in the list of saved configurations.

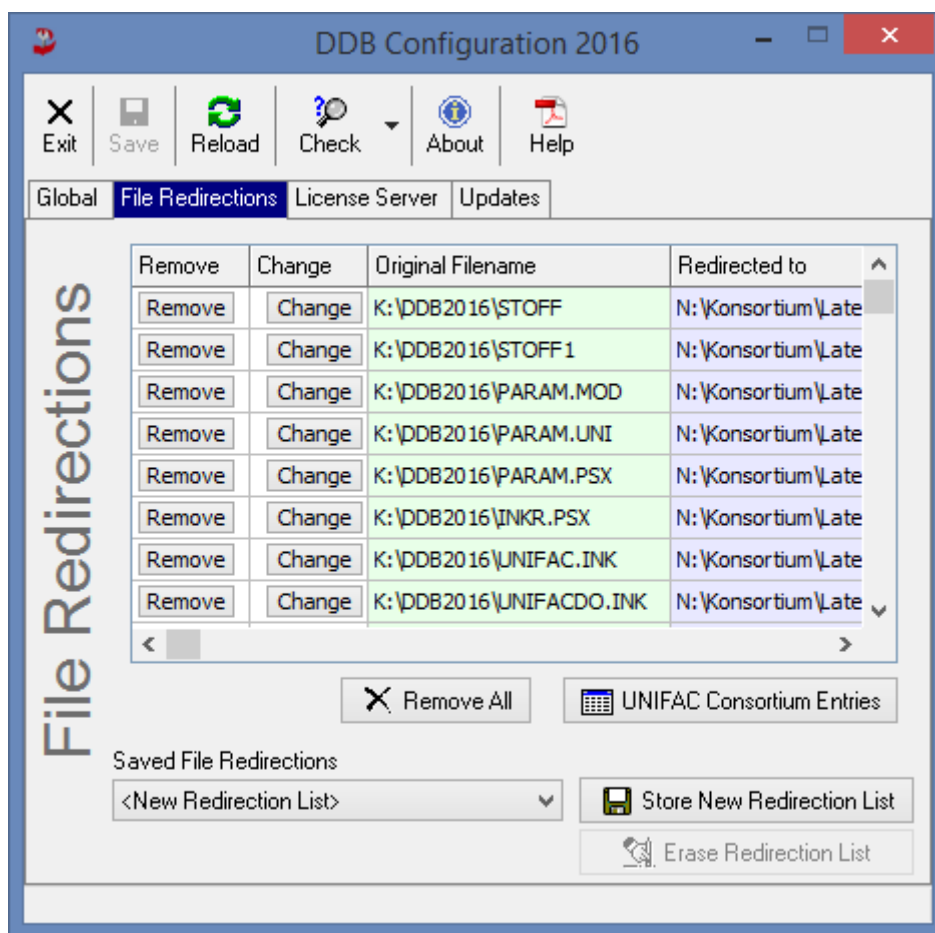
Use the *Erase Configuration* button to erase a saved configuration from the list.

When a saved configuration is selected from the list the settings are modified immediately.

### File Redirections

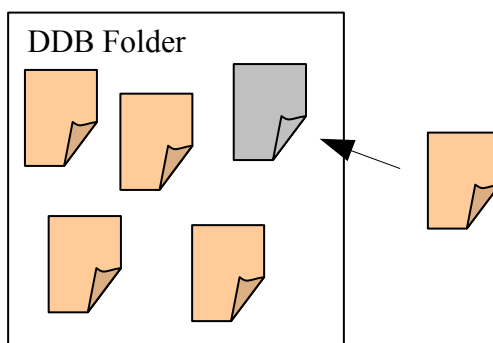
File redirections can be used to redirect the access to single files from the public DDB folder to files stored in

another folder. This might be useful if there's a different parameter or data file that should be used instead of the delivered files.



It's possible to specify up to 25 file redirections. The "Remove" button deletes an entry and the "Change" invokes two file selection dialogs where the original file and its substitution must be selected. Please note that the file redirections are activated for the *current user* only.

This technique allows replacing access to data files from the DDB folder by customer data files. Please be aware that this will lead to different calculations and displays.



Use the *UNIFAC Consortium Entries* button to redirect standard DDB files to the UNIFAC consortium files.



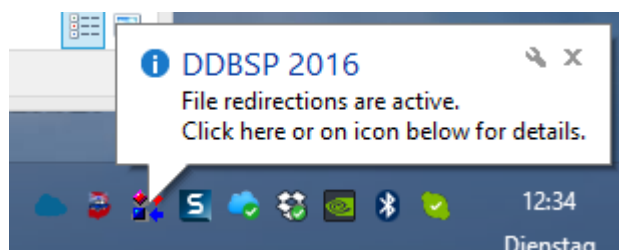
These files are delivered separately from the DDBST files. If the original files should be kept in the DDB folder but the consortium files should be used instead it is possible to select a folder where all delivered consortium files are stored. The result is that all DDB programs are then working with the consortium files.

Use the *Remove All* button clear all redirections.

To make the redirections active click the *Save* button in the tool bar.

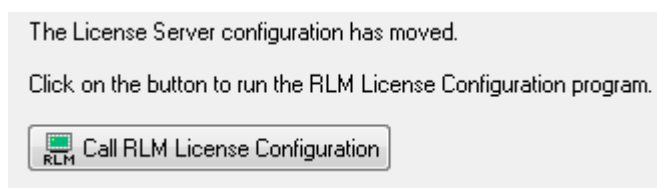
Use the *Store New Redirection List* button add the current setting to the list of file redirections. Use the *Erase Redirection List* button to remove a setting from the list of file redirections. When a saved redirections setting is selected the redirection entries are updated immediately.

For most DDBSP applications active file redirections are indicated by a balloon hint in the tray bar.



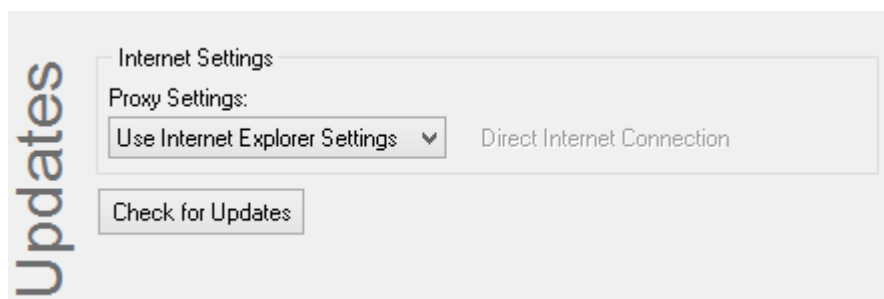
## License Server

The license configuration has moved to the *RLM License Configuration* program. You can start the program with a click on the *Call RLM License Configuration* button.

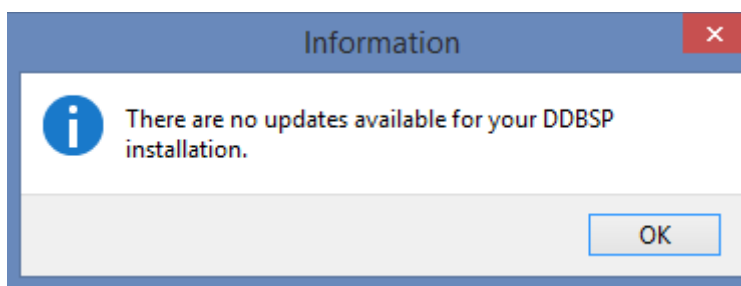


## Updates

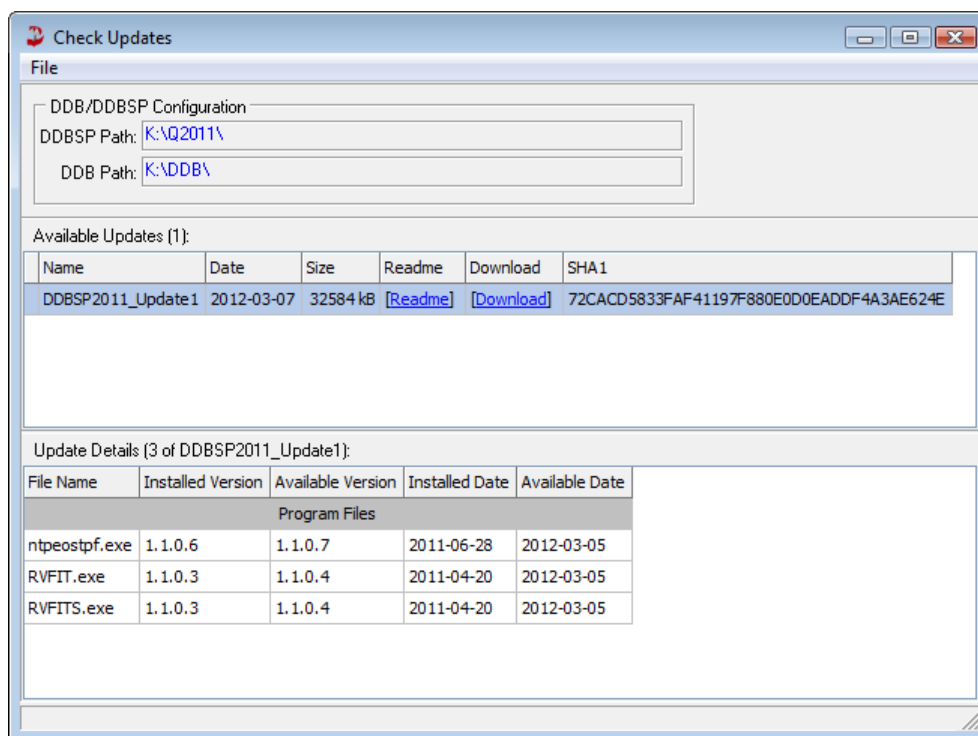
This function checks for available updates and patches DDBST has published on its website. If you do not have direct connection to the internet the proxy settings can either be manually set or the proxy settings of the internet explorer can be used (default).



If no updates are available the following message is shown:



Otherwise a new window will be displayed:



The dialog is listing all available updates. With a click on an available update in the upper list detailed information about the replaced files are displayed in the lower list.

The “[Readme]” link will use the default browser to display a web page with descriptions of the patch and the “[Download]” link allows the user to download the update using the default browser. This will not install the patch directly, this has to be done manually after the download has finished.