

# Pure Component Data Editing

Editing / Modifying DDB Pure Component Data

**DDBSP** - Dortmund Data Bank Software Package



DDBST Software & Separation Technology GmbH

Marie-Curie-Straße 10

D-26129 Oldenburg

Tel.: +49 441 36 18 19 0

Fax: +49 441 36 18 19 10

support@ddbst.com

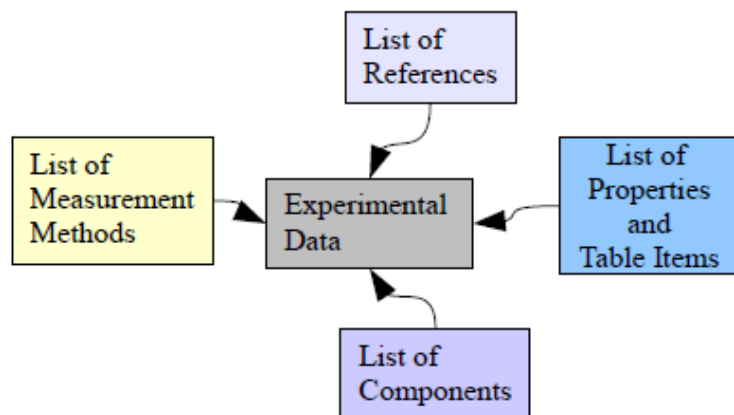
www.ddbst.com

---

1	Introduction.....	3
2	Defining the Reference .....	3
2.1	Adding a New Reference .....	4
2.2	Searching for References.....	5
3	Adding Datasets to the Current Reference .....	6
4	Adding Necessary Specifications for Single Sets.....	7
4.1	Component Selection .....	7
4.2	Property Selection .....	8
4.3	Specifying Table Entries and Their Units.....	8
4.4	Purity of the Component .....	9
4.5	Measurement Quality .....	9
4.6	International Temperature Standard .....	9
4.7	State.....	10
4.8	Measurement Method.....	10
4.9	Constant Property, Value and Unit .....	11
4.10	Data Input .....	11
5	Saving Data to File .....	13
6	Adding Data Sets to the Private Databank .....	14
7	Modifying Datasets in the Database .....	17

## 1 Introduction

This document is intended as a tutorial for storing private, customer-owned pure component data in the Dortmund Databank (DDB).



**Figure 1:** Simplified data bank structure

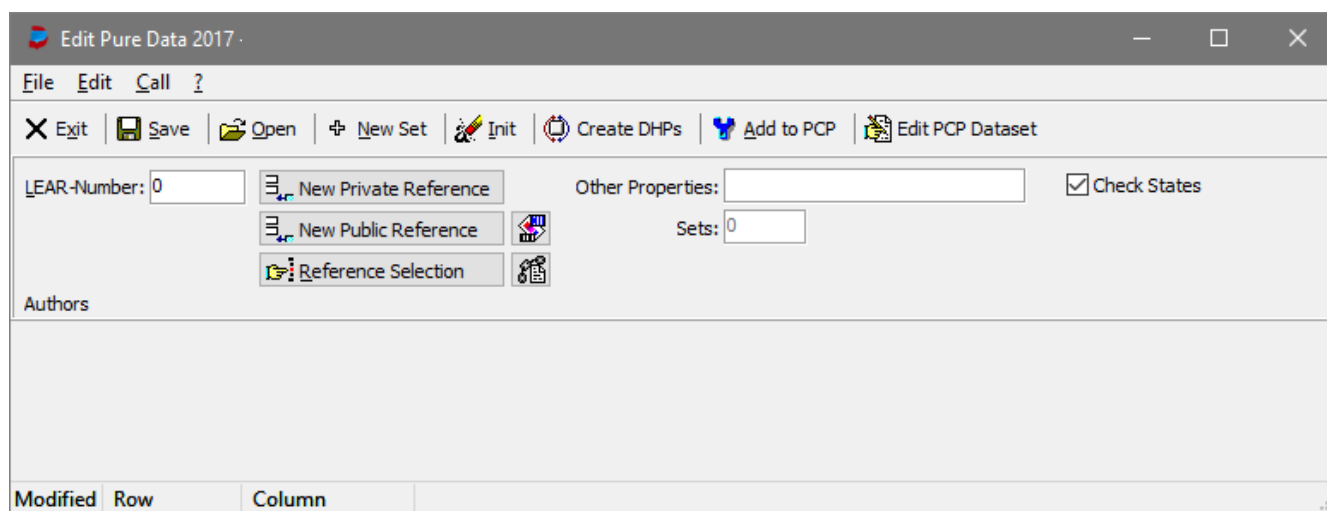
The pure component properties database contains experimental data plus additional data like references, measurement methods, a component specification and some other related information.

Components, measurement methods and references are stored separately from the experimental data. It is necessary to update these external lists before (new) references, methods, or components can be selected.

Properties and table items are also defined outside this editor in a definition file.

EditPureData (normally) does not edit sets in the database directly. Instead it works on files which can be added to the database. This working mode allows keeping originals of the edited data whereas the database only contains recalculated and even somewhat “trimmed” data.

Editing data bank sets directly is possible though and will be explained at the end of this tutorial. This document is a stepwise introduction in the usage of this program. It starts with the necessary prerequisite for all DDB data sets. The main window looks as follows:



## 2 Defining the Reference

Every data set in the DDB is referenced. The reference is normally an article from a scientific journal but might be also a thesis or a report.

## 2.1 Adding a New Reference

For new private data sets it is recommended to create a new private reference.

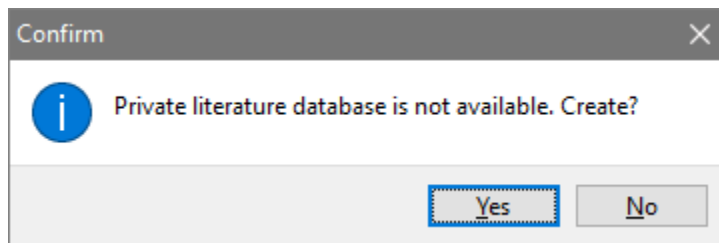
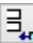
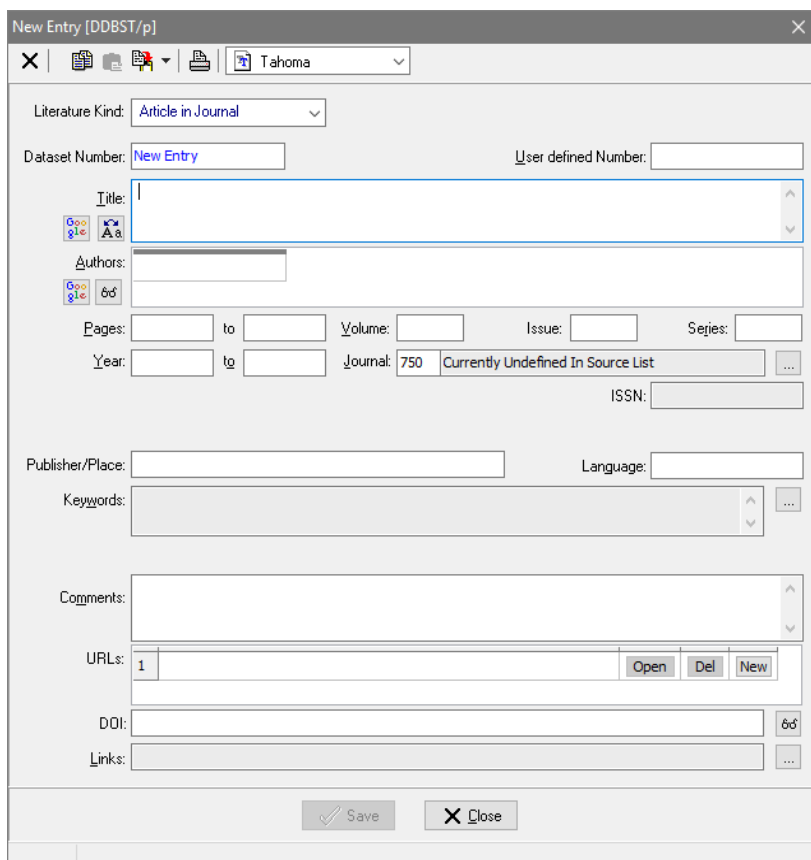


Figure 2: New reference data base creation.

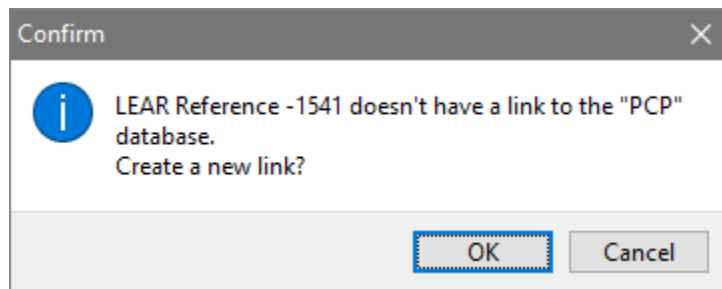
A new reference can be inserted by selecting the button  **New Private Reference** - a menu item in the “Edit” menu is also available. If no private literature databank is present, the program asks if it shall create a new one. After confirming with “Yes” the literature management program displays the edit dialog for a new reference (see below).



None of the entries are necessary to enter; even the completely empty sheet can be saved. But it is recommended to define at least authors.

Figure 3: New reference editor

The next question is

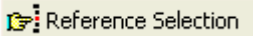


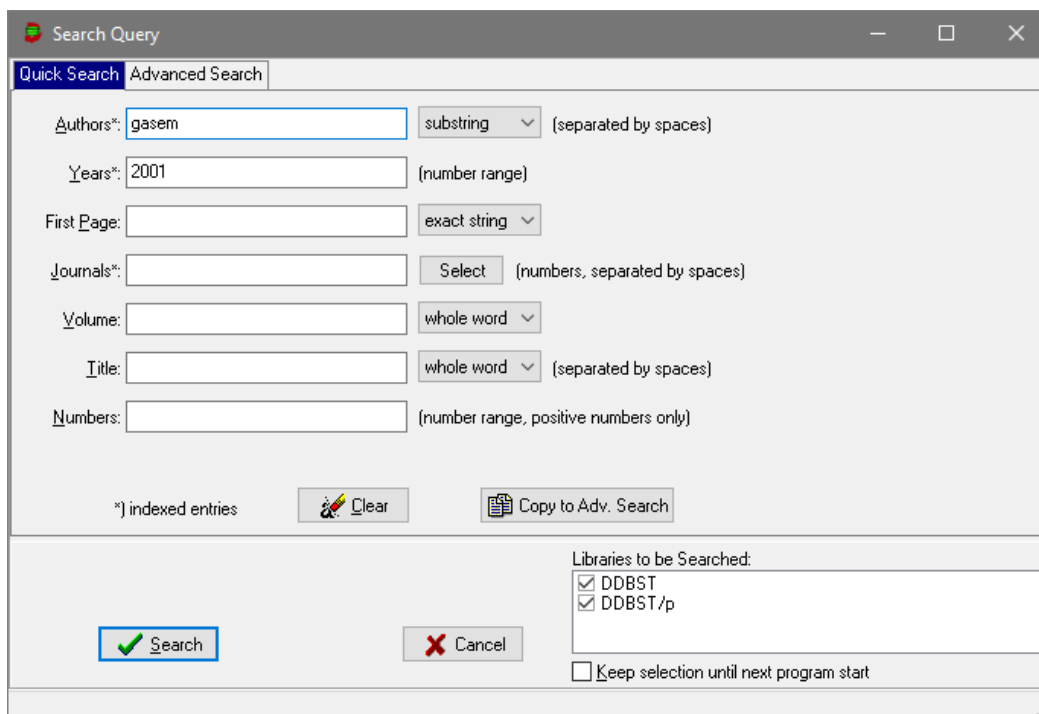
**Figure 4:** New reference – link creation.

You **have** to select “OK” if you want to use the new reference. “Links” are obligatory keywords in the literature database for determining the databases – in case of EditPureData the pure component properties database - where the reference is in use.

A more detailed description of the literature management program (LEAR) is available.

## 2.2 Searching for References

If you don't want to create a new reference you have to search the available literature databank for the wanted article or report. After selecting the  button a search query dialog is opened.




**Figure 5:** Reference search – search query.

The result for the given example is

Number	Title	Authors	Publication Year	Pages	Keywords	Vol
30608	An Automated Apparatus for Equilibrium Phase Compositions, Densities, and Intefacial Tensions: Data for Carbon Dioxide + Decane	Shaver R.D.; Robinson R.L.; Gasem K.A.M.	2001	43 - 66	Auszuwerten; X.DDB; density; surface tension; vapor liquid equilibrium	
30613	Infinite-dilution activity coefficients for several solutes in	Schult C.J.; Neely B.J.; Robinson R.L.;	2001	117 - 129	activity coefficients	

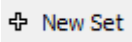
Datasets: 6

Figure 6: Reference search – search results.

Select  to select the reference. If a PCP link is missing it will created like for new datasets.

### 3 Adding Datasets to the Current Reference

EditPureData works reference-centered. All datasets from a single reference can be edited together.

For appending (empty) data sets to the current reference select the  button. Using it twice EditPureData shows the following screen:

LEAR-Number: 1271

Property: 1: Dynamic Viscosity

Component: 1 Acetaldehyde

Purity Type: 0: Percent

Measurement Method: 1080 Entry not evaluated by

Internat. Temp. Standard: 0: Unknown

State: 0: Unknown

Constant Property: 0: --None--

Other Properties:

Sets: 1

Check States

[1271] Gmehling J., Unpublished Data, 1-43, 1972-2011

#Line	Modified	Row	Column
1			
2			
3			
4			
5			
6			
7			
8			
9			
10			
11			

Item: 1: Temperature

Unit: 1: K

Factor: 1


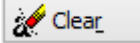
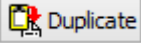
Errors: 0

Error Unit: 1: K

Column 0

Buttons: Add, Modify, Save as Standard, Add Standard Column

Figure 7: Adding data sets

The buttons ,  and  allow to paste selected entries from other sheets, clear the current sheet or to remove the current set.

## 4 Adding Necessary Specifications for Single Sets

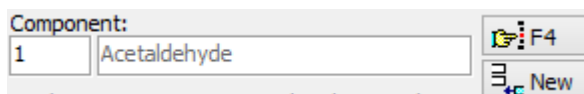
Necessary specifications are

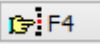
- Component
- Property
- Table entries
- Units of table entries

Additional specifications are

- Purity of the component
- Quality of the measurement or data
- Used internal temperature standard
- State ('Unknown' is possible)
- Measurement method
- A constant value, its unit and value
- Errors for table items with their units

### 4.1 Component Selection



The key F3 or selecting the  button starts the program ComponentSelection:

This program displays the entire list of components available in the DDB. For this tutorial, it is sufficient to double-click line number 5 (Ethylenediamine).

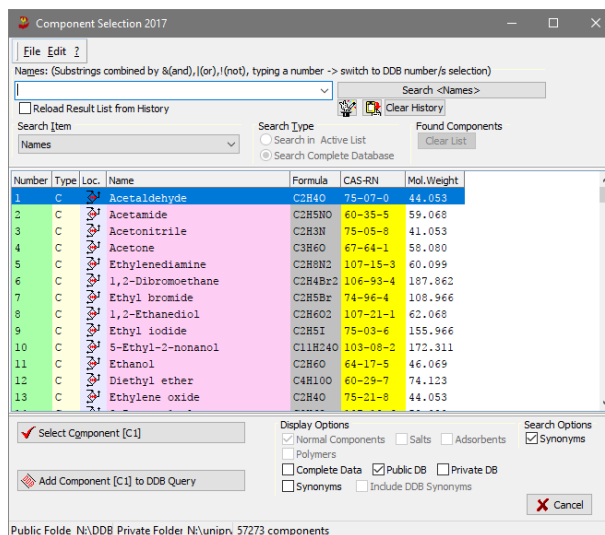
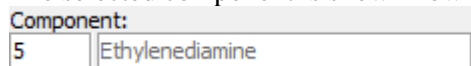


Figure 8: Component selection

The selected component is shown now in the edit field besides the search button:



If you have a new component you can enter quickly a new one by selecting the  button.

The “New Component” dialog allows entering two different names a CAS registry code, a molecular weight and the empirical formula.

Almost all entries are necessary mainly for calculation purposes.

The new component can either be stored in the public DDBST database or (recommended) in the private customer's database.

Figure 9: New component

## 4.2 Property Selection

EditPureData provides a list of available and editable properties. The list of properties is controlled by a definition file named PURSEL.DEF in the public DDB folder. It is intentionally not described here since it **must** not be modified by users. If there is an urgent demand for further properties please contact DDBST.

## 4.3 Specifying Table Entries and Their Units

The table entries and units dialog is a docked dialog at the right side of the data grid.

Figure 10: Table entry specifications

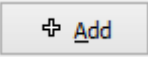

This dialog allows defining a single column in the data table. The table item can be either selected from the drop-down menu or from a pop-up-menu. The pop-up menu is somewhat more concise since it displays the complete list of table items at a glance.

The unit drop-down menu only contains the units for the currently selected table item.


The factor might be a numerical value but can also be one of the list

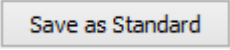
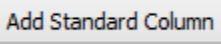
LOG: logarithm to the basis 10  
 LN: natural logarithm  
 E10: power of 10  
 EXP: power of e  
 EINS: divided by 1 over value  
 TAUX: divided by 1000 over value

Additionally it is possible to add an error for the entire column. It is also possible to specify a different unit which is only valid for the error (necessary for percent errors).

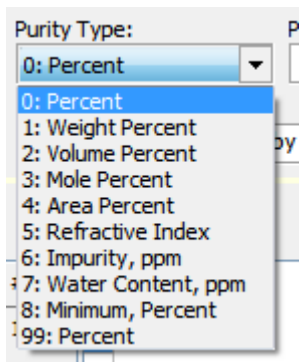
The button  adds a new column to the table and the button  would change the specified column. The “Modify” button is only enabled if a column in the main edit window has been selected. The



“Column” spin-edit  displays the selected column. EditPureData allows currently only up to six columns. If constant errors are used the column count decreases by the number of constant errors.

The  button allows defining a single table item to be set as a standard which then can be added by a single mouse click of the  button. This is useful for editing multiple data sets in a row with the same independent data type like temperature or pressure.

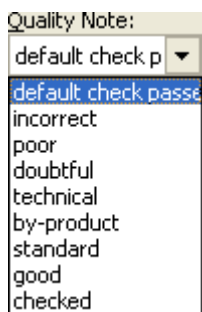
### 4.4 Purity of the Component



Both values 0 and 99 refer to an unspecified percentage.

Figure 11: Purity

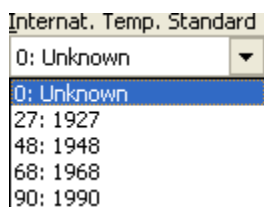
### 4.5 Measurement Quality



“default check passed” means that only a first glance test has been made during the import or input but no concrete judgment was possible. The other words are simply descriptions for notes from 1 (bad or even incorrect) to 9 (excellent).

Figure 12: Quality

### 4.6 International Temperature Standard

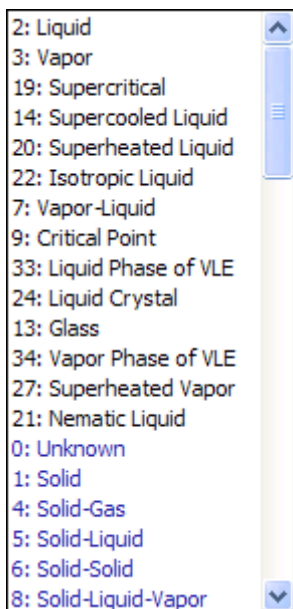


Five possible entries are possible like shown.

The ITS defines the (linearized) relationship between resistance and temperature in Platinum resistance thermometers.

Figure 13: Temperature standard

## 4.7 State



Both menus are showing the complete list of possible states. The drop-down menu needs some scrolling to see all possible states.

**Figure 14:** States drop down menu

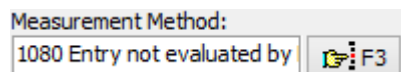
EditPureData has an internal list which states are suitable for a given property. These states are sorted to the front of the list. The selection of other state description is still possible, though.

### *Possible Pitfalls:*

EditPureData allows selecting the state “Unknown” but since this entry is sometimes essential for a correct property identification it is very recommended to select the correct state.

Another possible pitfall is the consistency between the selected property and the state. Please be aware that some properties need special states. For example, the states “vapor-liquid” or “solid-vapor” have to be used for heats of vaporization. Other states are incorrect. EditPureData is unfortunately currently not able to check these possible problems.

## 4.8 Measurement Method



The list of methods for the pure component properties data bank is extremely long since it more a collection of random strings imported from many sources than a man-made validated list of methods.

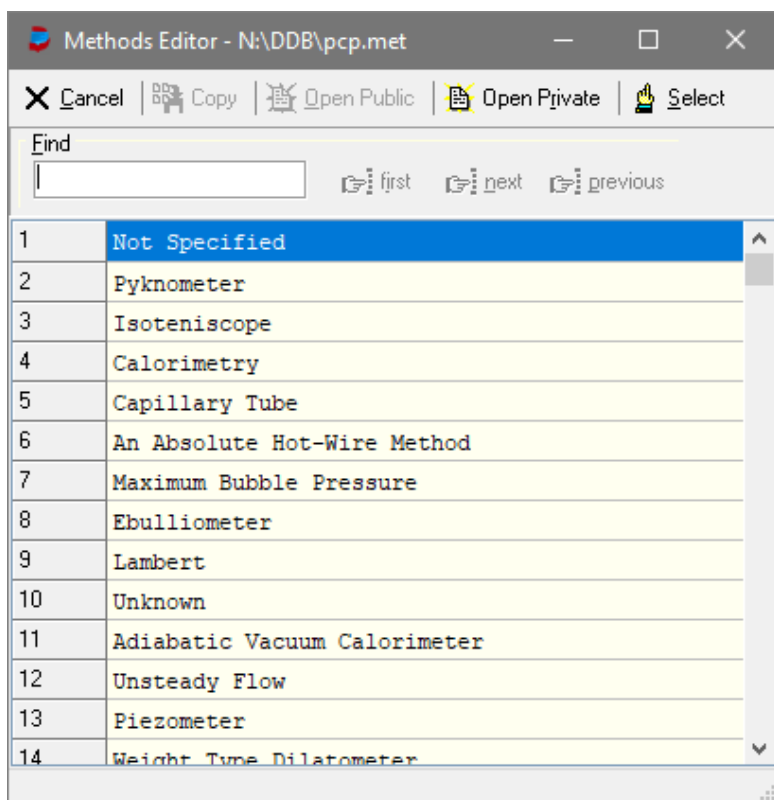





Figure 15: Measurement methods

A method can be selected by the  **Select** button or by double-clicking the line.

 **Open Private** resp.  **Open Public** allow to switch a public and a private method's list.

### 4.9 Constant Property, Value and Unit

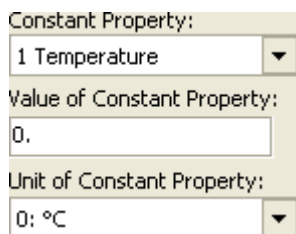


Figure 16: Constant

It is possible to define exactly zero or one constant value for a dataset.

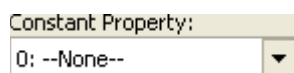


Figure 17: No constant

### 4.10 Data Input

Data input can be started after all columns have been defined. The specified table entries are displayed in the top rows of the columns together with their units, factors, and column errors.

T [°C]	VIS [G/MS]
Factor: 1	Factor: 1
Error: 0 [°C] <input type="button" value="Remove"/>	Error: 0 [G/MS] <input type="button" value="Remove"/>
323	2.15
328.84	2.04

In this example we have two columns – a temperature and a viscosity column.

Figure 18: Example input

The options “Advance in Row” and “Advance in Column” change the behavior of the return/enter key for the “auto-advance mode” of the grid. After typing a value and hitting the enter/return key the cursor jumps to the next cell either in the next row (“Advance in Row”) or the next column (“Advance in Column”).

The  button allows displaying a quick plot of the currently edited data set. If there are already data sets available in the pure component properties data bank these data are plotted together with the new set.

The new data points are red squares, the PCP data points are black stars.

The diagram can be copied (as metafile) and printed. The  button starts the Dortmund Data Bank program and displays the data sets already available in the DDB.

The “Scales” allows switching between the display of “x vs. y” and “1000/x vs. log y”.

The “Polynomial Fit Deviations” can be used to take a quick look if the experimental data points are lined up properly – which is obviously a suitable criterion only for some properties.

The “Polynomial Fit Deviations” can be used to take a quick look if the experimental data points are lined up properly – which is obviously a suitable criterion only for some properties.

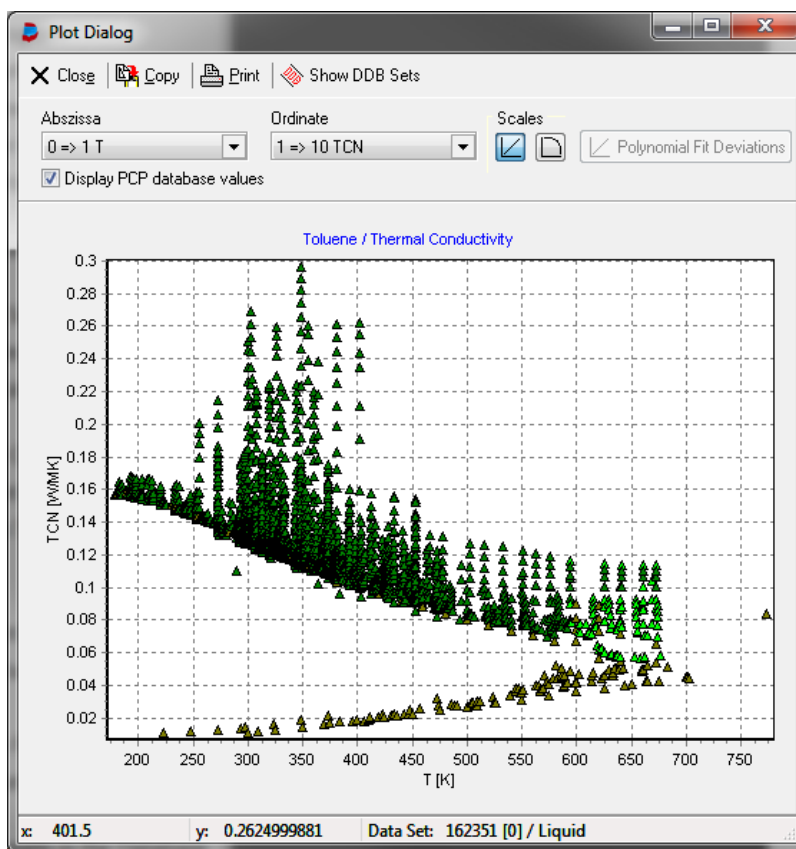
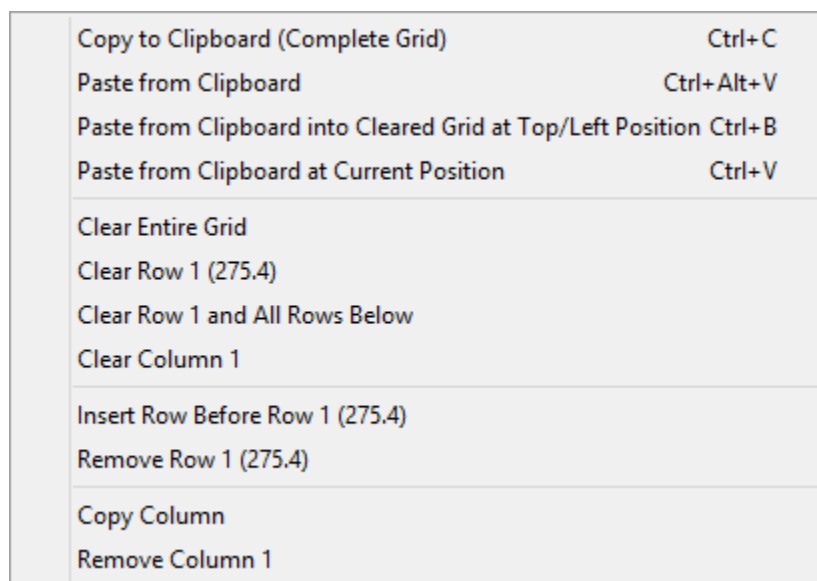


Figure 19: Plot

The buttons  and  allow to copy and paste the data grid to and from the Windows clipboard – for modifying data outside EditPureData e. g. in a spread-sheet.



The data grid has a context (pop-up) menu with some additional functions.

These function do not change the column specifications, they only manipulate the grid content.

Figure 20: Data grid context menu

## 5 Saving Data to File

After selecting the  button a standard Windows save dialog is used to determine a filename.

The filename extension must be “.ol”.

EditPureData has not stored any data in the database yet. The stored file contains the originally typed data and is a common text file where the single entries are identified with tags.

It is recommended to store and archive these files for future maintenance. Only these files can be reloaded.

In the background EditPureData automatically stores two other files with the same name but different extensions.

The “DHP” files contains recalculated data and will be used to append the data to the pure component properties database.

The “PCP” files contains almost the same data as the DHP file and was intended to be used in the databank retrieval program. This format is written only for compatibility reasons.

## 6 Adding Data Sets to the Private Databank

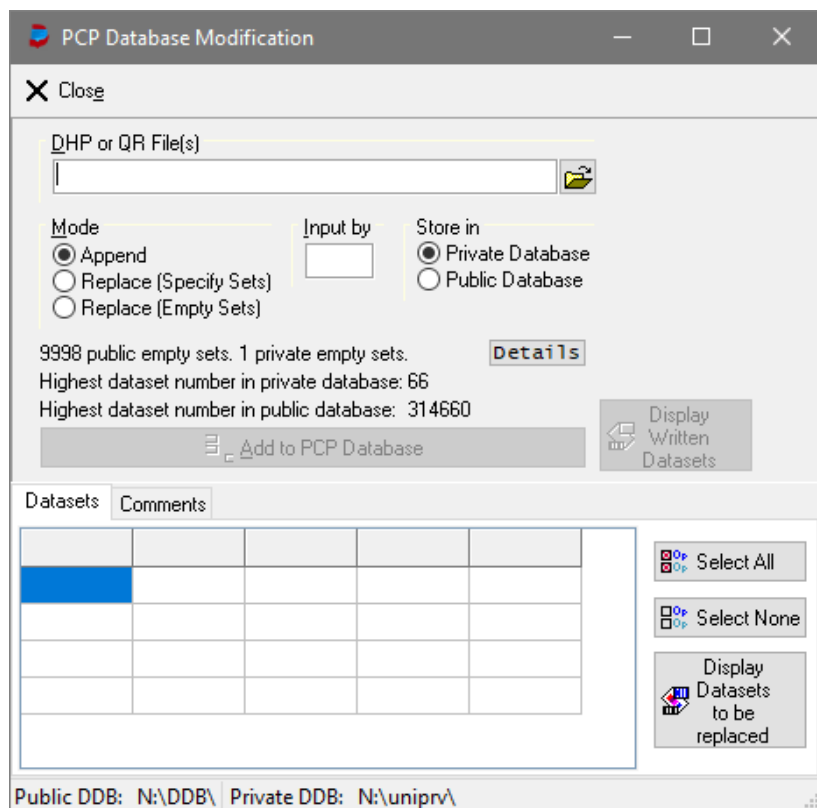
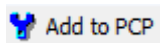


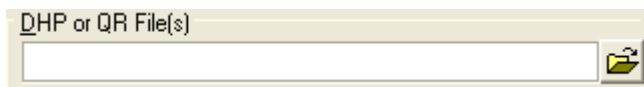
Figure 21: Adding data sets to the data bank.

This dialog might need some seconds to be responsive because the program searches initially for deleted sets.

The list of deleted sets is necessary because EditPureData offers an option to overwrite previously removed data sets.

The following steps are necessary to add datasets to the pure component properties databank.

**First Step:** Select “DHP” files (see page 13 for a short description of DHP files)



The program uses a standard Windows open dialog. After the data sets have been loaded the program displays the number of data sets found (“DHP File contains 15 data set(s)”) in the “Comments” page and the complete list of sets in the “Datasets” page.

**Second Step:** Select update mode.

It is possible to append new data, overwrite existent datasets or overwrite already deleted datasets

1. Append: All datasets found in the DHP file will be appended at the end of the databank. It is possible to select only some of the loaded data sets by setting or removing the check marks in the “Data sets” page (see Figure 28 Dataset List - Append Mode).
2. Replace (Specify Sets): The datasets will replace existent datasets. The user has to specify the dataset number (see Figure 29 Data Set List - Replace Mode).
3. Replace (Empty Sets): The new datasets will replace previously removed datasets. It is possible to select only some of the loaded datasets by setting or removing the check marks in the “Datasets” page (see Figure 28 Dataset List - Append Mode).

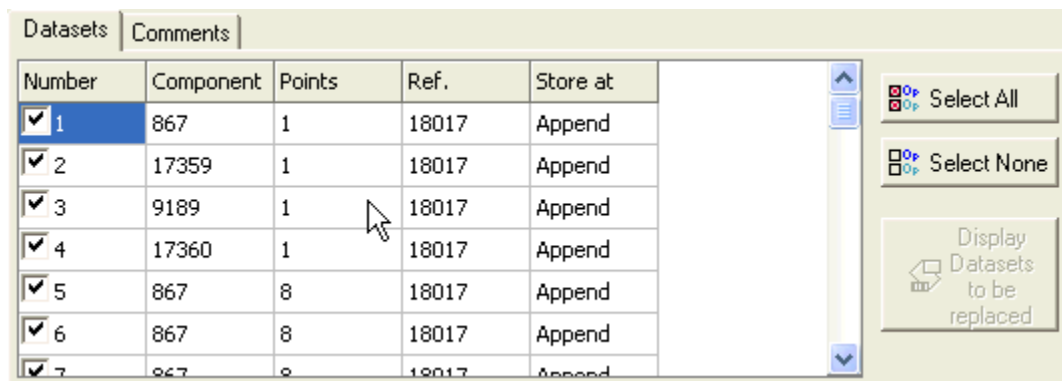


Figure 23: Data set list – append mode

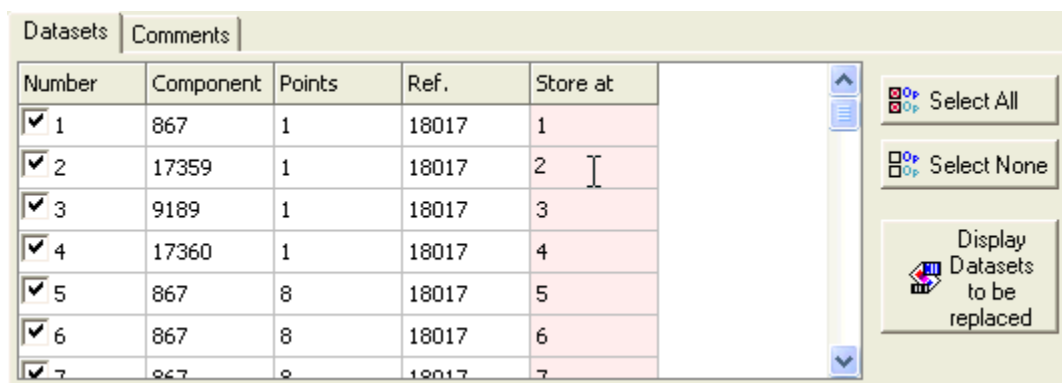
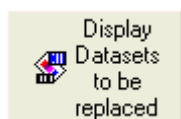
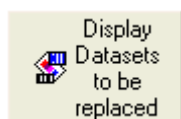


Figure 22: Data set list – replace mode

**Third Step:** “Input by” specification.

Every dataset has a two-character signature for the specifying the editor of the data sets.



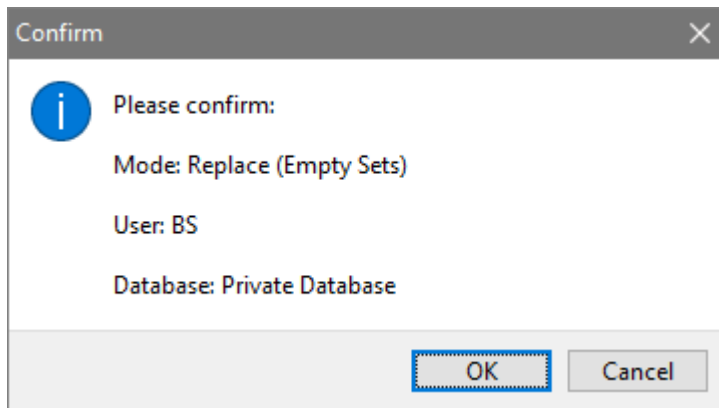
The buttons  starts the database retrieval program and displays the data sets selected for replacement.

**Fourth Step:** Select database

It is possible to store data in the public database (from DDBST) and a customer's database (private). Adding data sets to or replacing data sets in the public database is not recommended since future delivery would overwrite these changes.

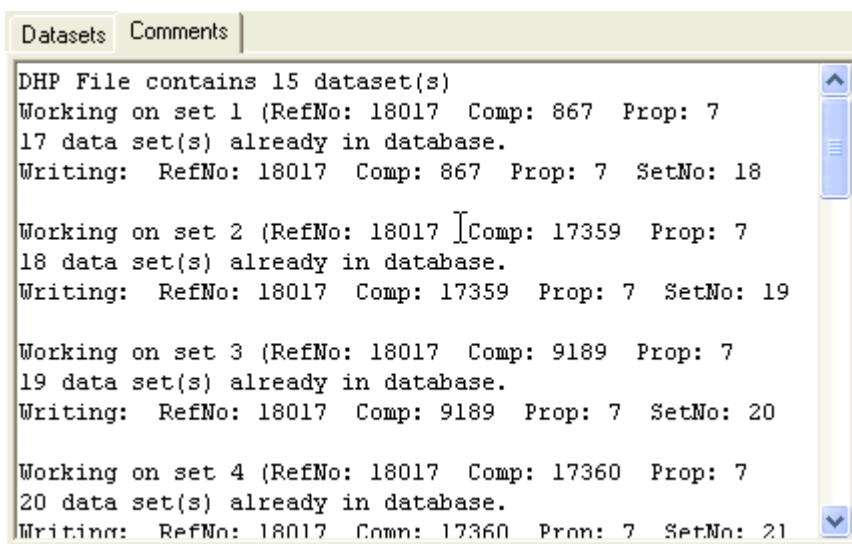
**Fifth Step:** Add data sets

A last question has to be answered:



**Figure 24:** Confirm write access

After the data sets have been added EditPureData displays a protocol which shows the old data set count and some details of the new data sets like the reference and component number, the property code and the data set number.



**Figure 25:** Update log

After this step the datasets are stored in the pure component properties database.



## 7 Modifying Datasets in the Database

If the original “ol” is not available or for a quick repair it is possible to modify data sets in the data bank directly. You have to know the data set number which can be obtained in the database retrieval program.

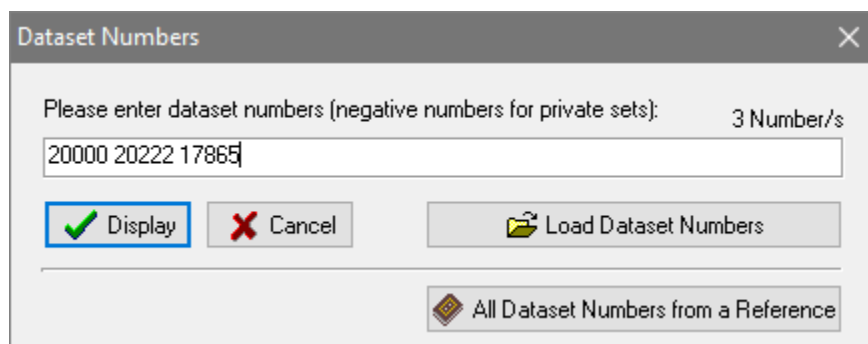


Figure 26: Edit window

The program opens a separate edit window for every data set entered in this dialog.

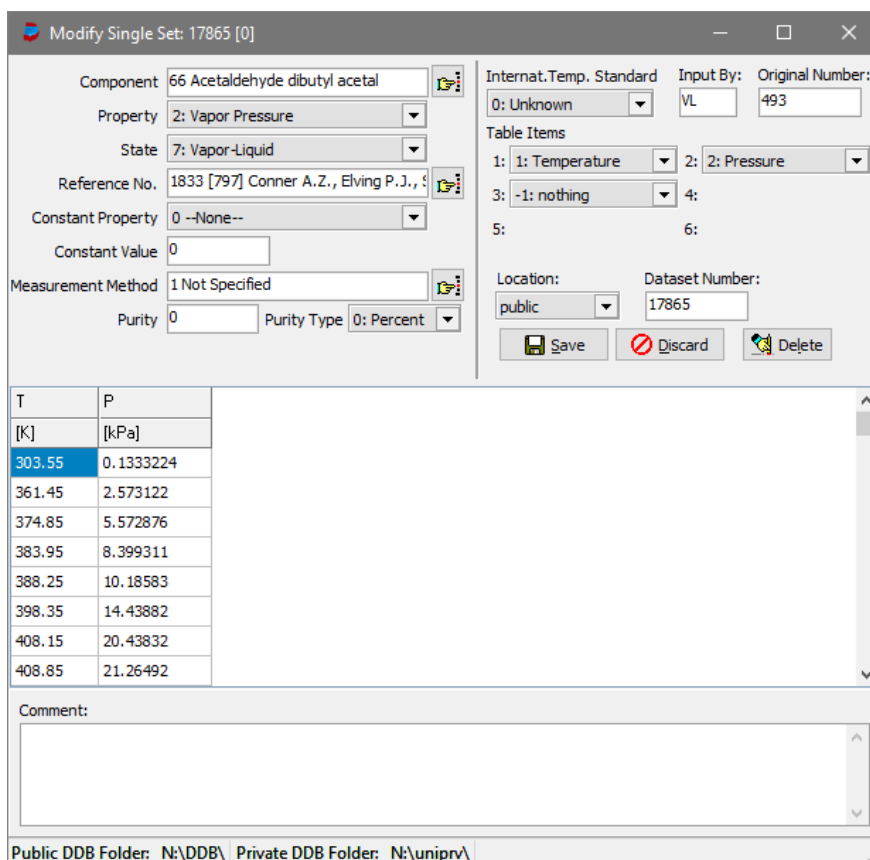
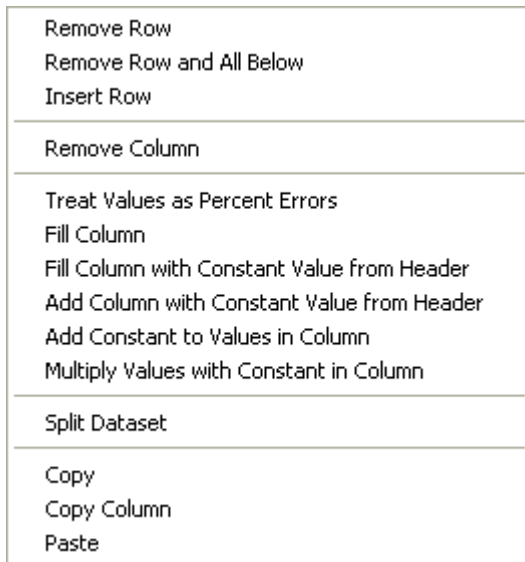


Figure 27: Direct database editor

The main difference is that the databank contains recalculated data sets with standard units and some few other restrictions. The editor does not allow to change units and the data set cannot be loaded from file or stored to

disk.

Most other properties can be changed like it has been done in the normal file-oriented editor. Additional feature can be found in the context menu of the data grid.




Several functions have been introduced due to common errors in the database.

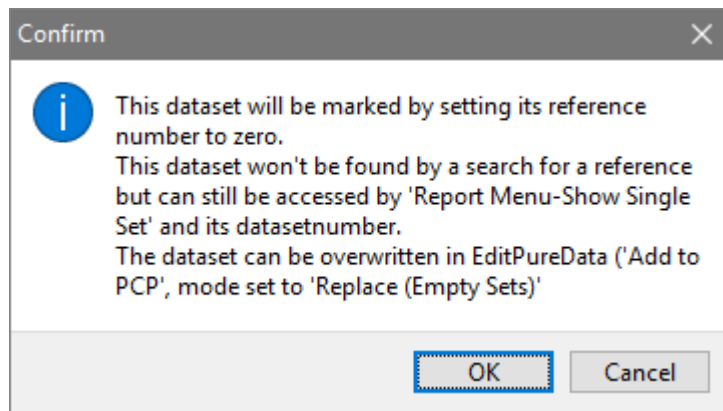
**Figure 28:** Data grid context menu

The three buttons perform the following actions:

 Save Save the modified data sets in the database.

 Discard Discard any modification

 Delete Delete the current data set from the databank. Deleted data sets are not completely erased only their reference number is set to zero. The behavior is described in the confirmation dialog presented before actually removing the data set.



**Figure 29:** Confirmation of data set removal