

DDBSP RLM License Server Installation Guide

DDBSP - Dortmund Data Bank Software Package



DDBST Software & Separation Technology GmbH

Marie-Curie-Straße 10

D-26129 Oldenburg

Tel.: +49 441 36 18 19 0

Fax: +49 441 36 18 19 10

support@ddbst.com

www.ddbst.com

1 Introduction..... 3

2 Installation Requirements 3

3 Installation of the License Server 4

4 Request and Install a License 7

5 License Server Administration 7

 5.1 The Embedded Web Server 7

 5.2 The RLM Utility Program..... 8

 5.3 The RLM Server Configuration Program 8

1 Introduction

The license server is the rights manager in the DDB system. The server knows how many users can use a DDB program at a time. All single programs like *Dortmund Data Bank*, *Artist*, etc. are asking the license manager for the permission to be executed.

The DDBST software uses the Reprise License Manager (RLM) from Reprise Software, Inc. (www.reprisesoftware.com) as license management system. The setup installs RLM as well as a small management program written by DDBST.

The license server and the client programs are communicating via TCP/IP. The client must be able to communicate with the server on two ports, the RLM port and the ISV port. If there is a firewall between the client and the server, the firewall must allow connections to both ports (RLM and ISV). On the client computer only the RLM port can be specified. The default RLM port is 5053 (registered by Reprise for the RLM License Server). Changing the RLM port means to change the port specification on both client and server side. If the ISV port is not specified, the server selects a free port by itself which can change on every restart of the server.

When the license server is started, it reads a license file (LIC) which can also contain the RLM and ISV port specification. The license file provided by DDBST does neither specify the RLM port nor the ISV port. Example:

```
HOST localhost 12345678
ISV ddbst
...
```

The license file is valid on the host with the computer ID “12345678” only. The HOST line does not contain a port number, so the default RLM port (5053) will be used. The ISV line does not contain a port number, so the license server will select a free port on every start.

Use the *RLM Server Configuration* program to change the RLM port or ISV port. Changes made to the contents of the license file other than the port numbers can make the license file invalid!

On the client computer only the license server location (and maybe the RLM port) has to be specified. To use *myserver* as license server on the default RLM port use

```
HOST myserver ANY
```

as license file.

To use *myserver* as license server on RLM port 34522 use

```
HOST myserver ANY 34522
```

as license file. The license server location and port can be specified during the installation of DDBSP. The specification can be changed afterward using the *RLM Client Configuration* program.

The license server contains an optional embedded web server to perform some administration tasks. The default port for the web server is 5054 (registered by Reprise).

Currently RLM v12.1 BL2 is used. Further details about the RLM license server can be found in the RLM end-user manual which is part of the installation.

For a **single user license** the license server is not needed.

2 Installation Requirements

To install the DDBSP RLM License Server administrative rights are required. The setup will be started with the option *run as administrator* on systems where the User Account Control (UAC) is turned on. On Terminal Server editions the setup has to be started from the *add/remove programs* dialog of the control panel.

3 Installation of the License Server

The license server setup can be started from within the *DDBSP Setup* program (see Figure 1), which is started automatically when the medium is inserted, and the Windows-Auto play-mode is enabled.

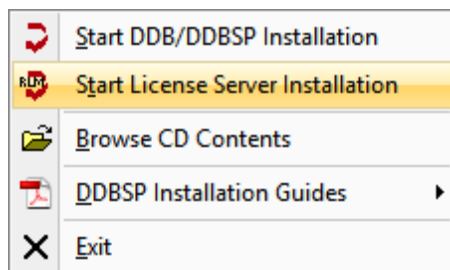


Figure 1

If a previous installation of the *DDBSP RLM License Server* exists on the system, it has to be uninstalled before the installation of the current version (see Figure 2). The uninstall process will keep all installed license files.

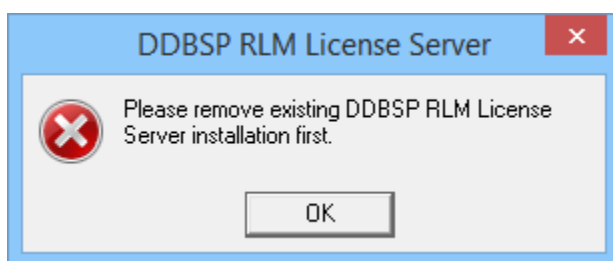


Figure 2

The setup starts with a *Welcome* dialog (see Figure 3).

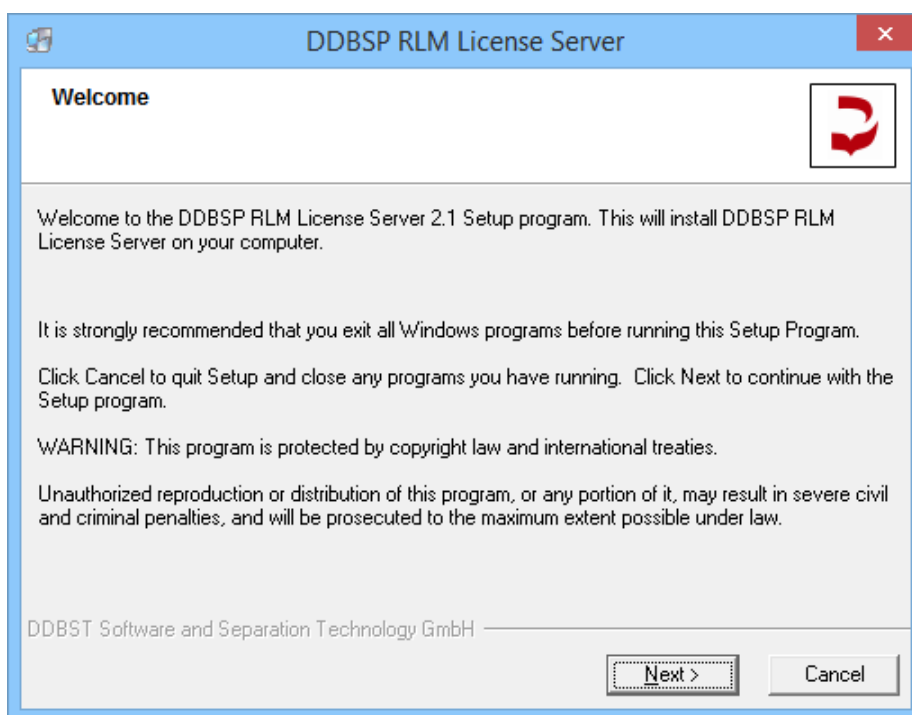


Figure 3

With a click on the *Next* button the setup displays the *Destination Location* dialog (see Figure 4).

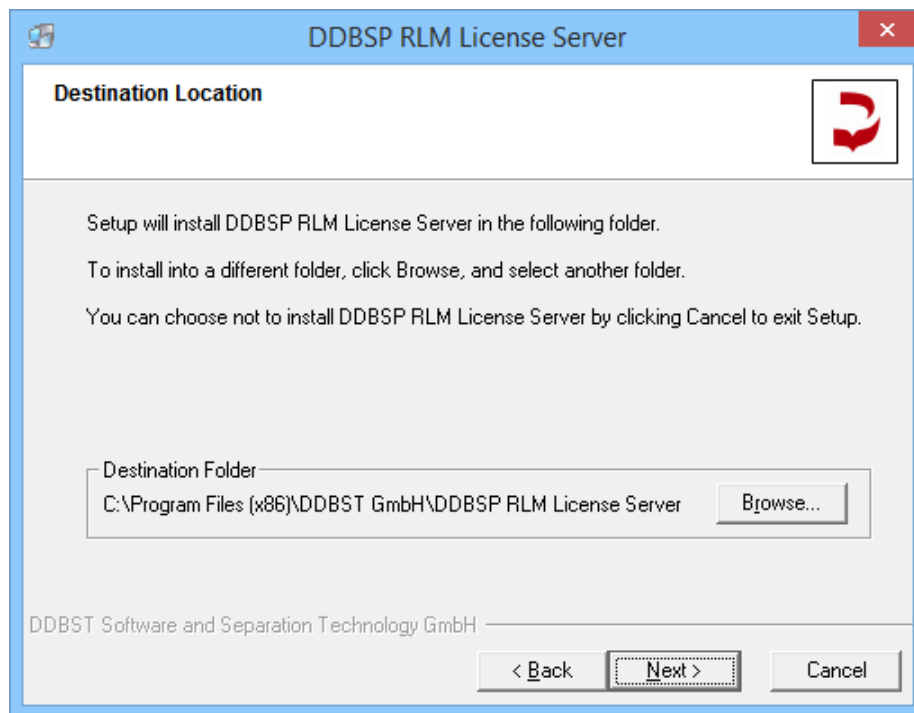


Figure 4

The *Destination Folder* is the directory where the program files are installed.

The next dialog (see Figure 5) allows the user to select a name for the program group that will be displayed in the Windows start menu. The option *Create shortcuts for all systems users* will place the program group in the “All users” branch of the Start menu, which will make the installed programs visible for all users working on the computer. The *Create shortcuts for current user* will place the program group in the “Current user” branch and makes it visible only for the currently logged-in user.

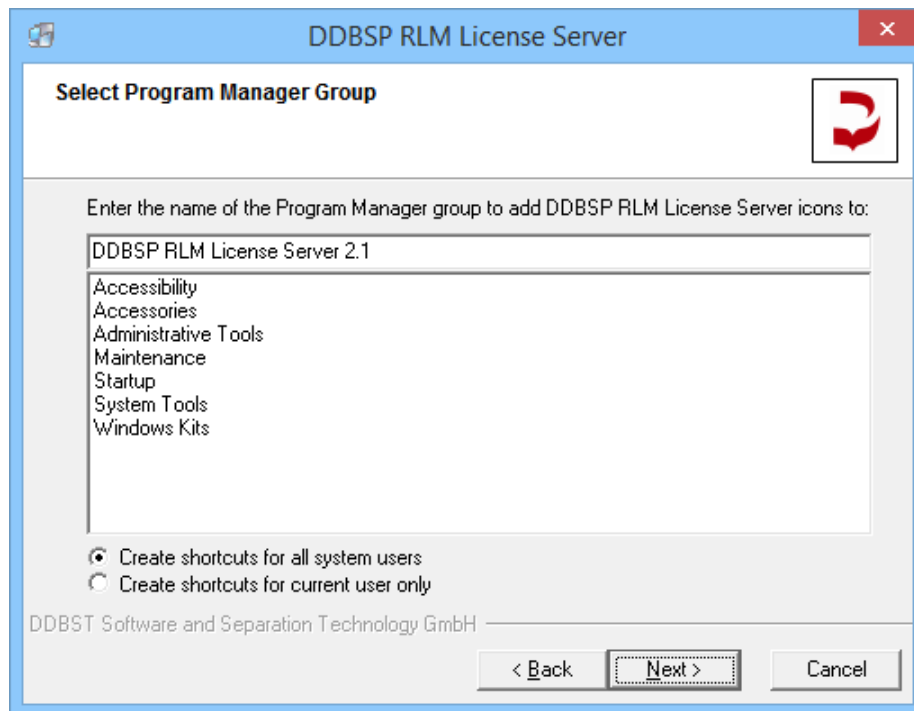


Figure 5

The *RLM Options* dialog (see Figure 6) can be used to activate the embedded web server (deactivated by default) and to specify the web server port (if activated). In addition, it can be specified if the server accepts the commands *rlmdown* and/or *rlmremove*.

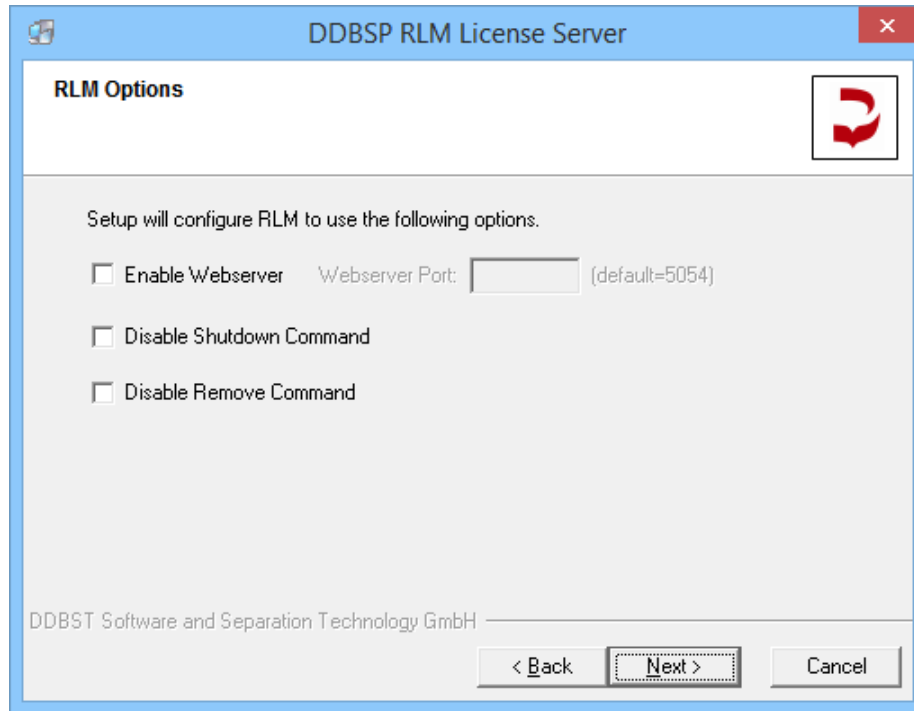


Figure 6

The next dialog (see Figure 7) displays all important options that have been selected during the setup process and should be read at least once in order to be sure not to have made a major mistake.

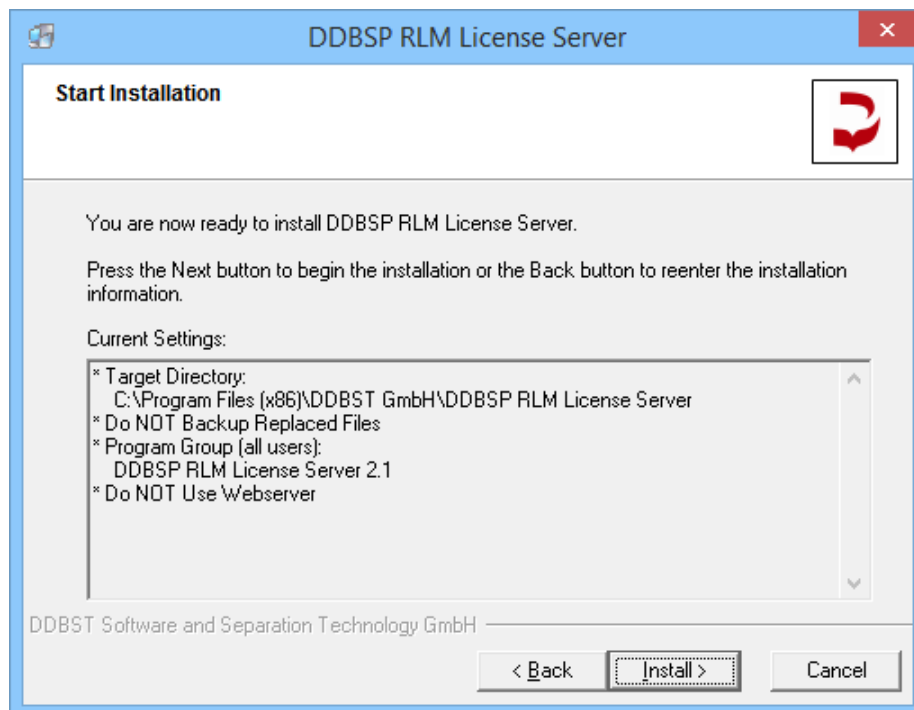


Figure 7

The next step is the installation of the application and service, the creation of the program group, and the registration of the uninstall information (see Figure 8).

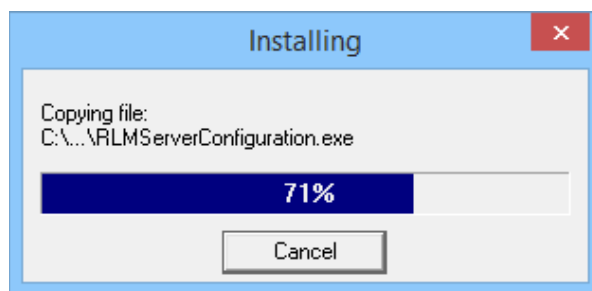


Figure 8

Finally, the *Finish* dialog is displayed (see Figure 9).

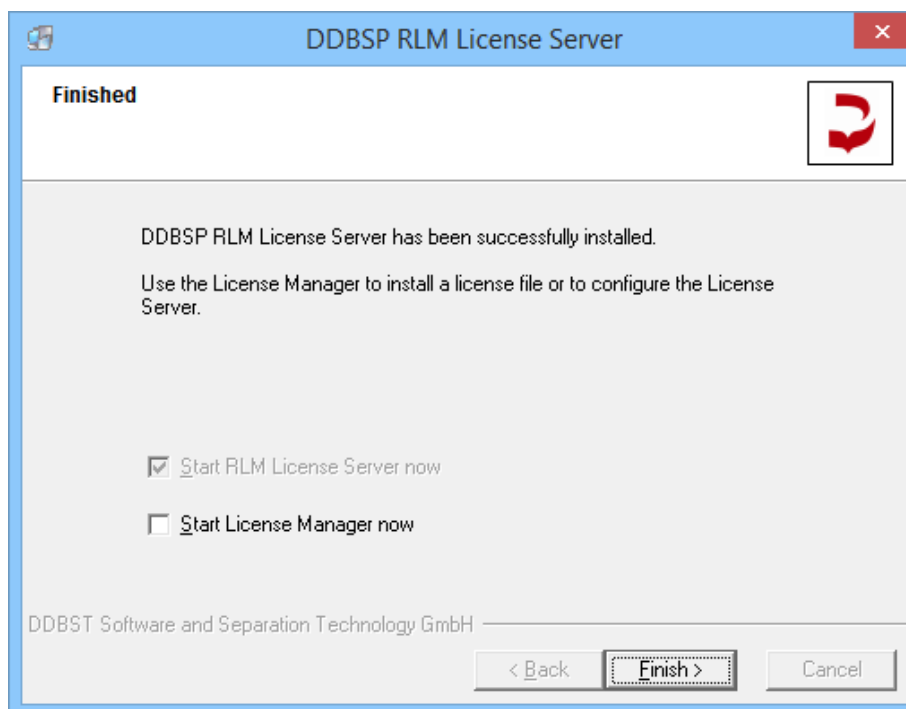


Figure 9

The license server runs as Windows service application. The *RLM Server Configuration* program can be used to request and maintain licenses. The program can also be used to display the license server status and to start or stop the service.

Use the option *Start License Manager now* to run the configuration program immediately after the installation has finished.

The setup will start the license server after the installation. In addition, the server is started automatically on every reboot of the system.

4 Request and Install a License

The license request and installation procedure is described in the *RLM Server Configuration* documentation.

5 License Server Administration

5.1 The Embedded Web Server

The license server has an embedded web server which can be activated at installation time. The web server is running on port 5054 by default. Please have a look at the end-user manual for details.

5.2 The RLM Utility Program

Some license server administration tasks can be performed with the *rlmutil* program. Please have a look at the RLM end-user manual for details.

5.3 The RLM Server Configuration Program

The *RLM Server Configuration* program can be used to request, install and review licenses (see above). In addition, some simple license server administration tasks can be performed: The license server can be started or stopped. The status of the license server can be displayed. Furthermore, the license server can be forced to reread all license files.