

DDB/DDBSP 2018 Installation Guide

DDBSP - Dortmund Data Bank Software Package



DDBST - Dortmund Data Bank Software & Separation Technology GmbH

Marie-Curie-Straße 10

D-26129 Oldenburg

Tel.: +49 441 36 18 19 0

Fax: +49 441 36 18 19 10

support@ddbst.com

www.ddbst.com

1	Installation Requirements	3
2	Installation of DDB/DDBSP	3
2.1	Welcome	3
2.2	End-User License Agreement.....	4
2.3	Setup Type	5
2.4	Installation Folder.....	5
2.5	DDB Configuration	6
2.6	License Server	7
2.7	Start Menu Shortcuts Folder.....	8
2.8	Configure Shortcuts.....	8
2.9	File Associations.....	9
2.10	Ready to Install	10
2.11	Installation Completed	11
3	DDB/DDBSP 2018 – Silent Installation	11
3.1	Silent Install.....	11
Example	12

1 Installation Requirements

To install DDB/DDBSP administrative rights are required. On *Terminal Server* editions the setup has to be started from the “add/remove programs” dialog of the control panel.

DDB/DDBSP needs a valid license to run. The license can reside on the local computer (single-user license) or can be served by a license server (concurrent license). The installation of a license is described in the *RLM License Configuration* documentation.

Since version 2018 the setup is an MSI based installation. The minimum required OS versions are Windows 7 resp. Windows Server 2008 R2.

2 Installation of DDB/DDBSP

The setup of the DDB/DDBSP is started by selecting *Start DDB/DDBSP Installation* within the program *SetupStarter.exe* (see Figure 1), which can be selected as option when the medium is inserted, and the Windows AutoPlay-mode is enabled. If the AutoPlay-mode is disabled, the main setup can be started by running the program *SetupStarter.exe* in the root directory of the medium.

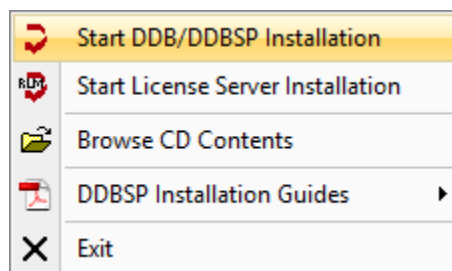


Figure 1

In **single-user** setups the option *Start License Server Installation* is not available.

The installation guides can be displayed using the *DDBSP Installation Guides* sub-menu.

2.1 Welcome

The setup starts with the *Welcome* screen shown in Figure 2. Click on the *Next* button to proceed.

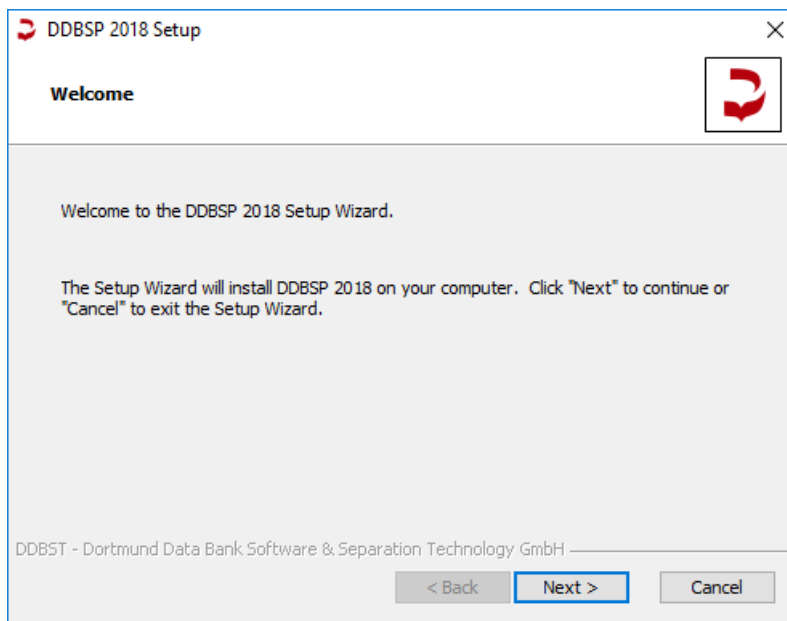


Figure 2

2.2 End-User License Agreement

The next step in the setup process is the display of the end-user license agreement (see Figure 3).

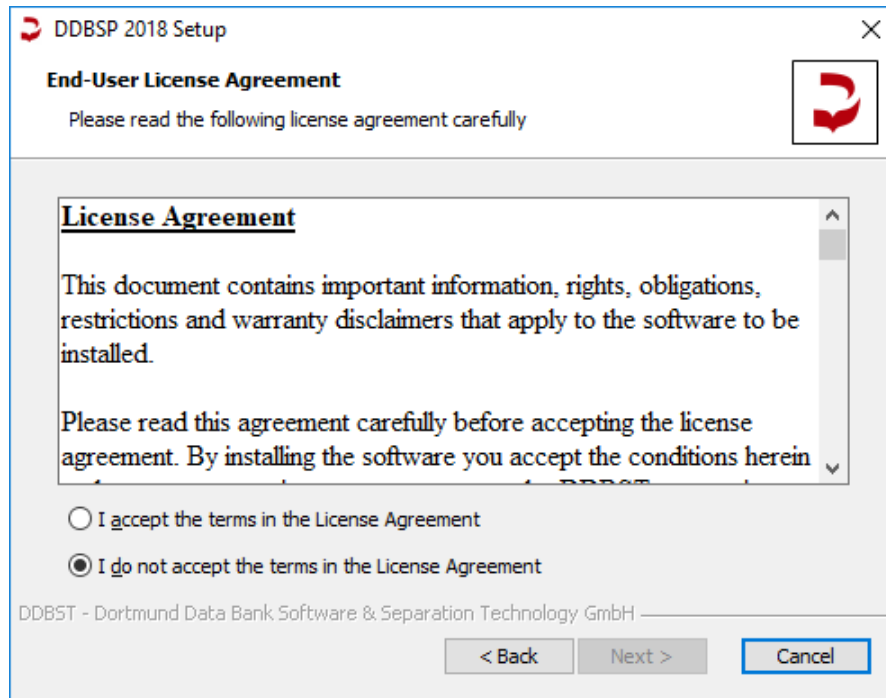


Figure 3

Read the agreement carefully and accept the license agreement by clicking the radio button as shown in Figure 4.

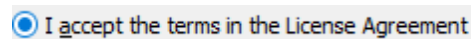


Figure 4

Click the now enabled *Next* button to proceed with the next step of the installation.

It is also possible to copy the text to the Windows clipboard by

1. clicking in the text area,
2. pressing *Control-A* to select the entire text and
3. pressing *Control-C* to copy the marked text to clipboard.

2.3 Setup Type

In the next dialog you can choose the setup type (see Figure 5). If you choose *Typical* then only the license server can be configured before the installation process starts. If you choose *Custom* then all dialogs described in the following sections will be displayed.

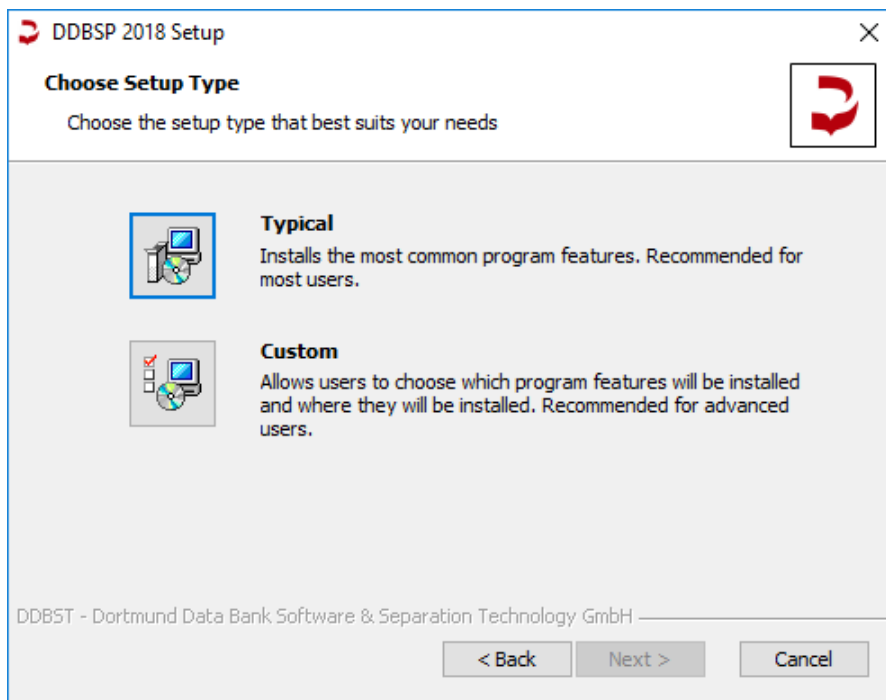


Figure 5

2.4 Installation Folder

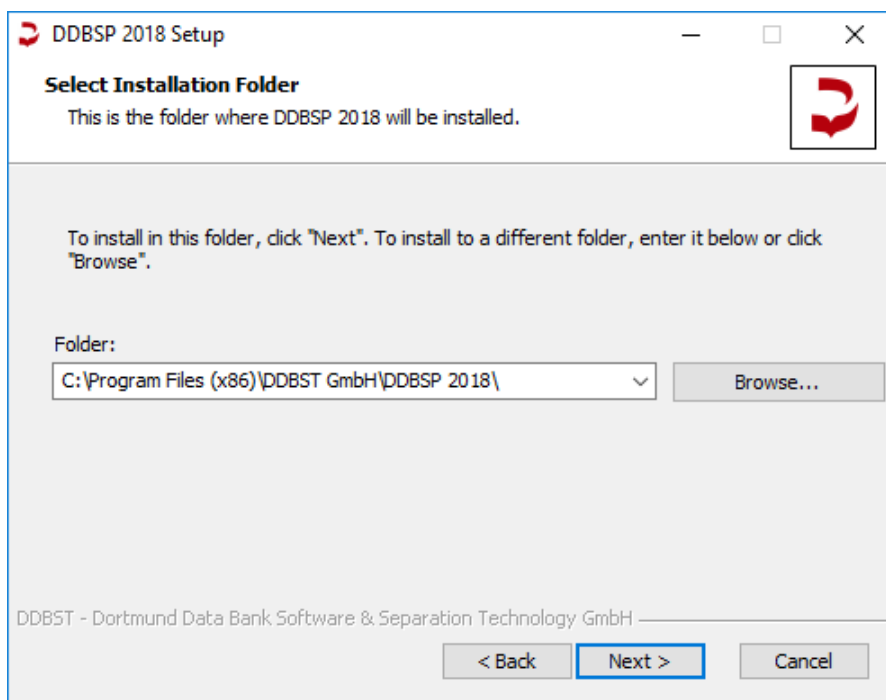


Figure 6

The next dialog (Figure 6) asks for the programs folder.

2.5 DDB Configuration

The setup now displays the *DDB Configuration* dialog (Figure 7).

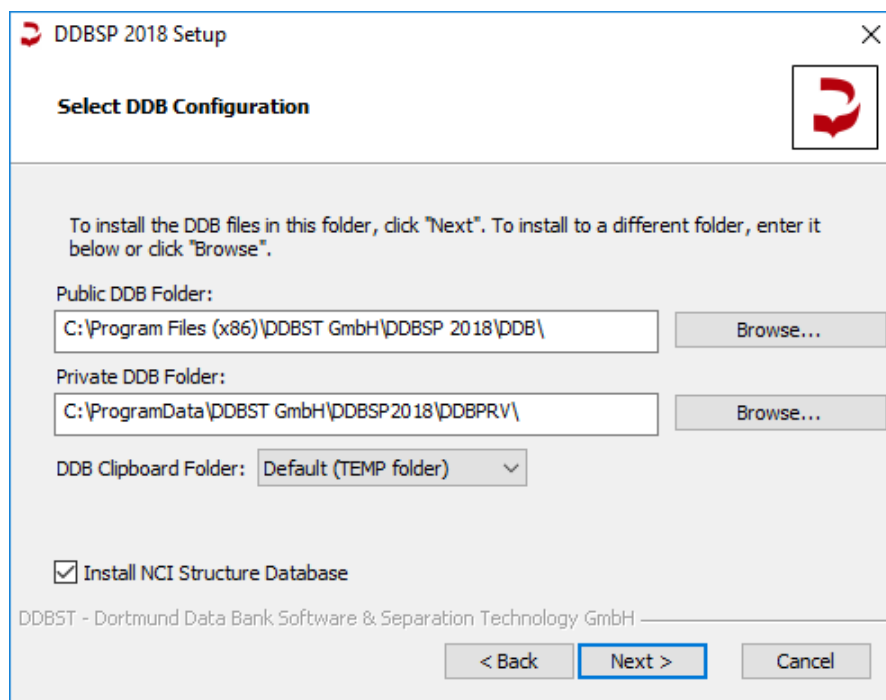


Figure 7

The dialog is used to specify the path to the folder where the public DDB files will be installed and the paths to the private DDB and the DDB specific clipboard folder. Non-existing directories will be created. The folders can be changed by changing the contents of the edit fields or by selecting the *Browse* buttons.

For the clipboard folder the default setting is to use the Windows TEMP folder (which may be user specific). To select a different folder switch from *Default* to *Custom* and change the folder settings (see Figure 8).

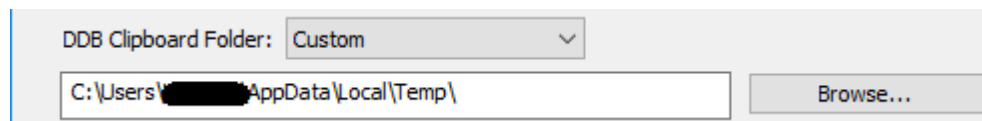


Figure 8

The clipboard folder must be writable for all DDBSP users.

The default location for the public DDB folder is a sub-folder of the programs folder. The default location for the private DDB folder is a DDBSP 2018 specific sub-folder of the global application data folder.

In some editions of DDBSP the *DDB Configuration* dialog is missing.

All three folders must be different. Otherwise the software will show unexpected behavior.

If the *Artist Structure* package is part of the setup then the optional *NCI structure database* can be installed.

2.6 License Server

The *Select License Server* dialog (see Figure 9) will come up next.

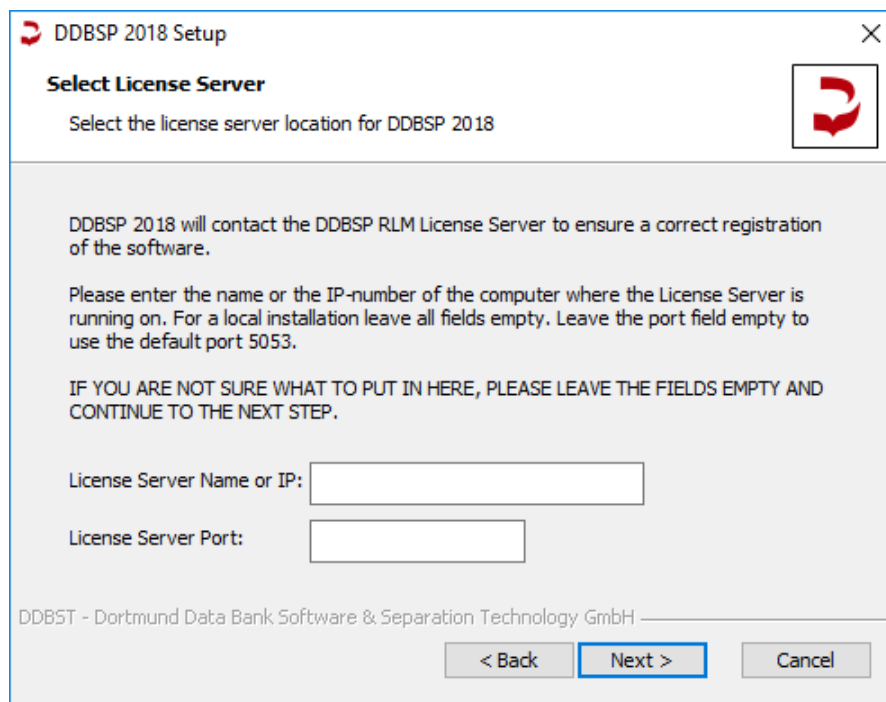


Figure 9

For users of a **single-user** license all entries should be left empty. For users of a **concurrent** license the location of the license server has to be specified either by specifying the name or the IP address (IPv4) of the machine where the license server has been installed. The IP address is essentially a four-byte number where the single bytes are values from 0 to 255. Please ask your network supervisor for the name or IP address of the license server machine. If the license server is installed on the same machine either "127.0.0.1" as server IP address or "localhost" as server name has to be used.

If you want to use the default port (5053) for the communication between application and license server then leave the field *License Server Port* empty.

Please note that the setup does not check if the server name or IP address is valid and points to an existing machine. In addition, it is not checked if client and server use the same port. If any of the specification is incorrect the DDB programs won't work. But it is not necessary to re-install the programs since the license server specification can be modified later on by the *RLM Client Configuration* program. Use the page *Licenses* to review and change the license server location or manage local licenses. The program is located in *Additional* folder of the DDBSP start menu folder.

In some editions of DDBSP the *Select License Server* dialog is missing.

2.7 Start Menu Shortcuts Folder

The next dialog (see Figure 10) allows the user to select a name for the DDBSP start menu folder.

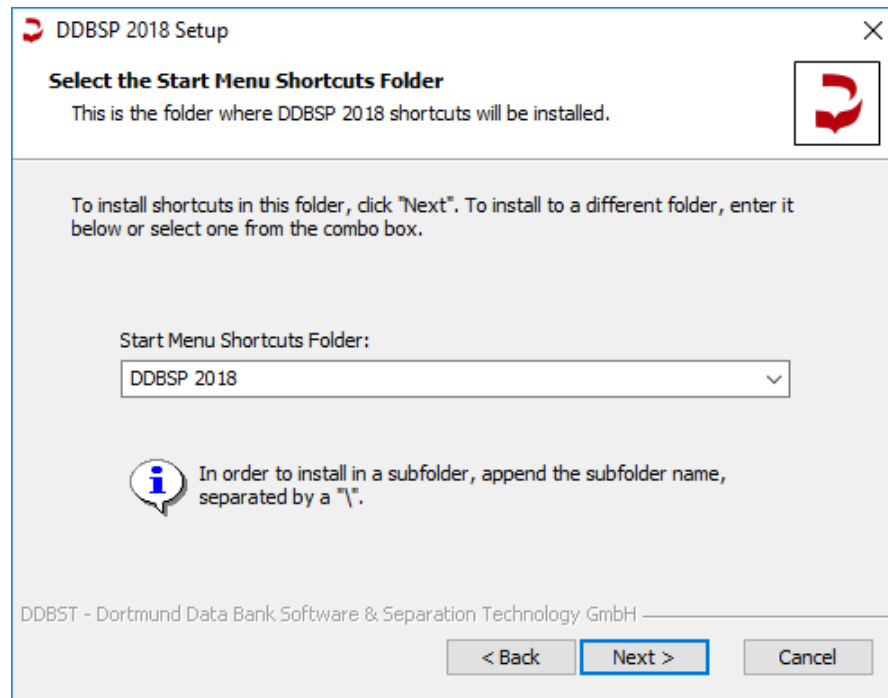


Figure 10

2.8 Configure Shortcuts

The *Configure Shortcuts* dialog (see Figure 11) allows the user to place a shortcut to the DDBSP start menu folder on the desktop.

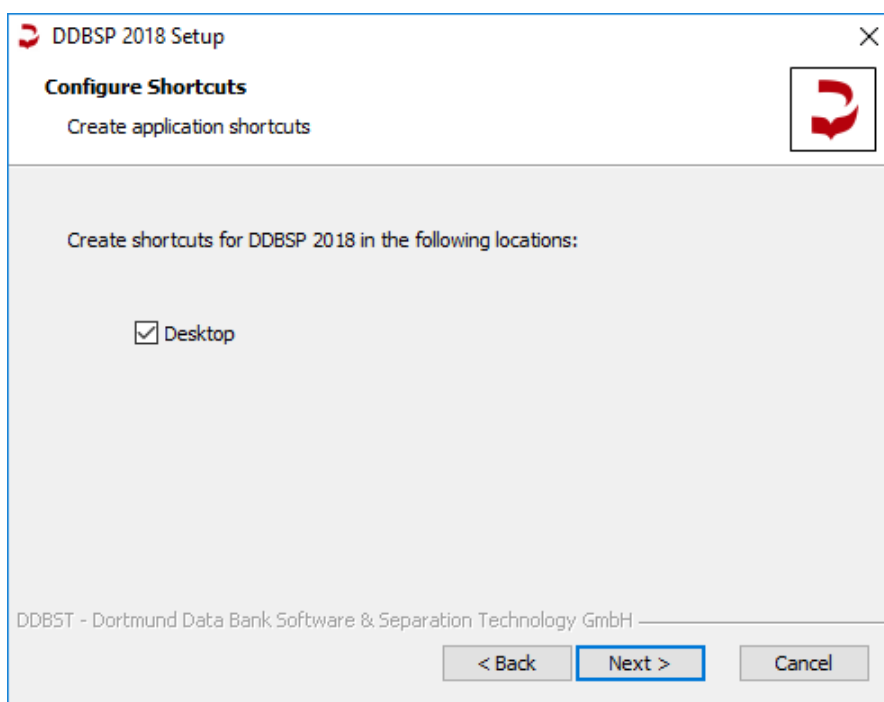


Figure 11

2.9 File Associations

In the Select File Associations dialog (see Figure 12) the user can select which file types should be associated with DDBSP. Depending on the packages included in the setup not all file types may be active.

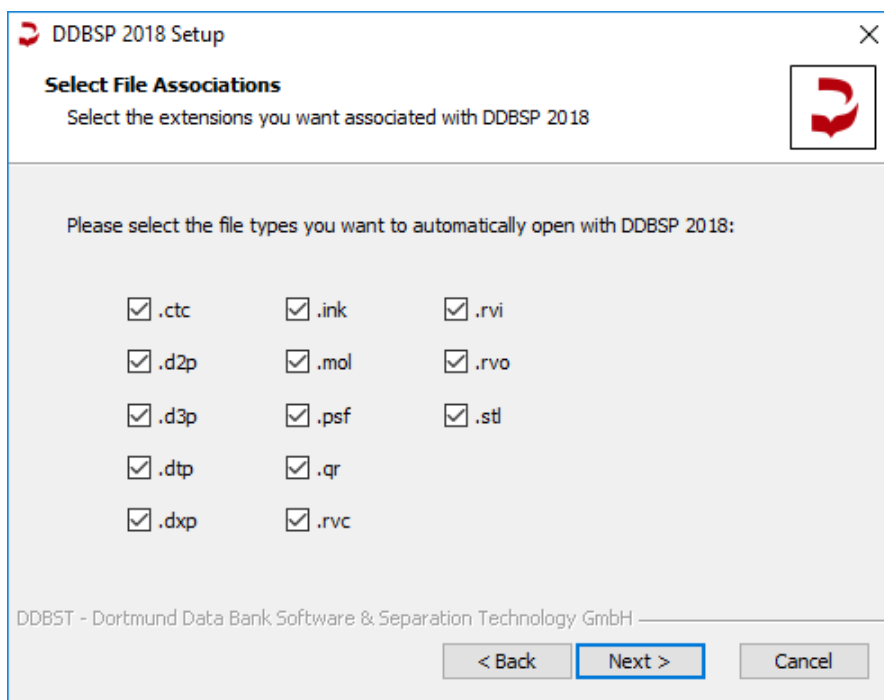


Figure 12

2.10 Ready to Install

In the *Ready to Install* dialog (see Figure 13) click on the *Install* button to start the installation.

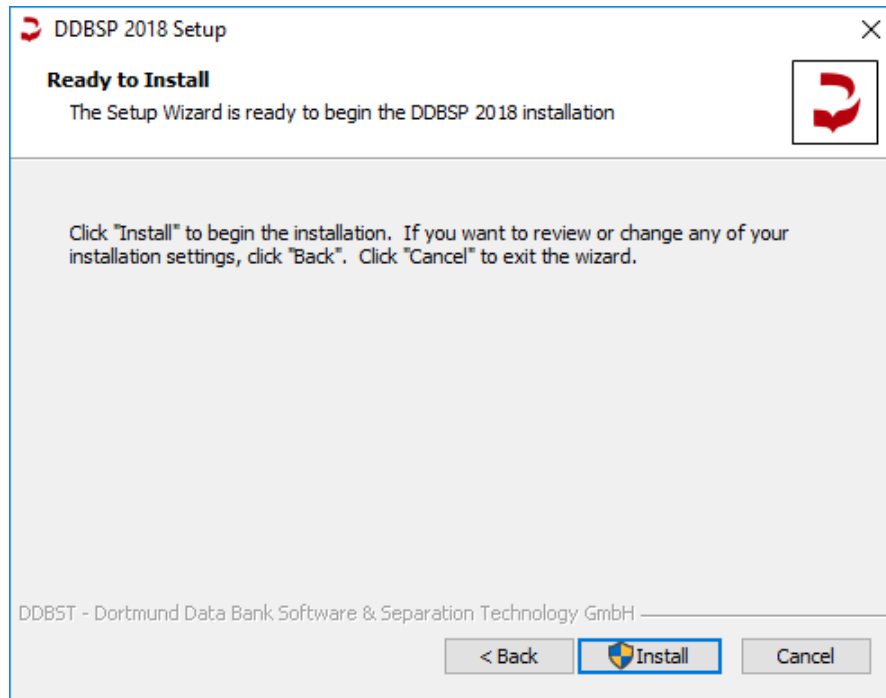


Figure 13

Depending on the system settings the *User Account Control* (UAC) will ask for permission to proceed with the installation (running elevated).

Now the files will be installed and the system will be configured (see Figure 14). This can take several minutes.

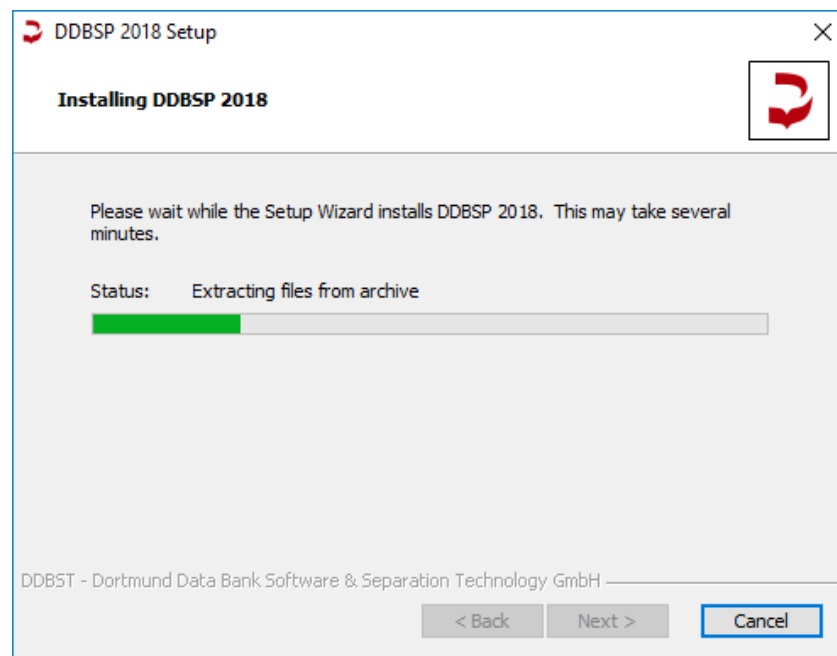


Figure 14

2.11 Installation Completed

The last dialog of the setup allows the user to set some options (see Figure 15).

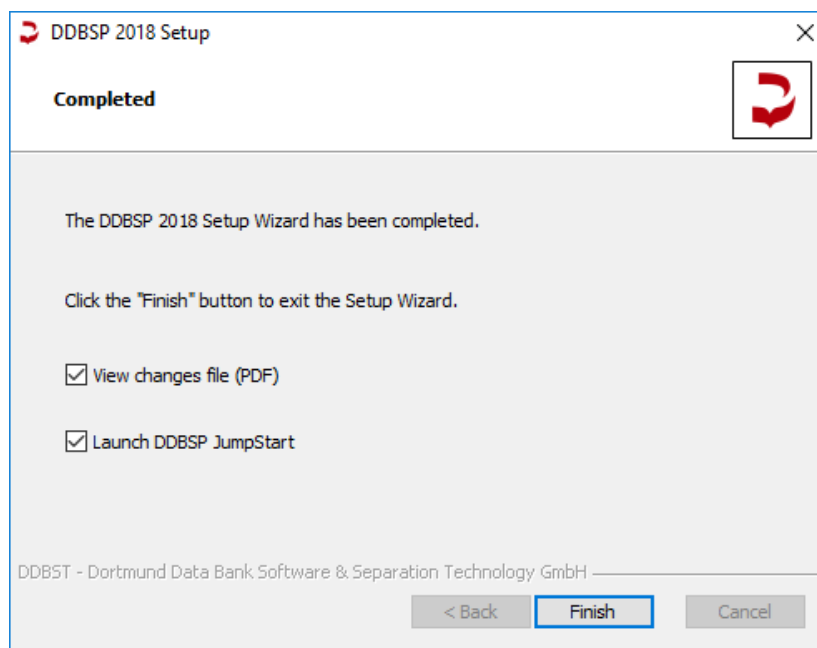


Figure 15

The option *View changes file (PDF)* has to be activated to see the changes and progress for the current version. The option *Launch DDBSP JumpStart now* runs the DDBSPJumpStart program immediately.

3 DDB/DDBSP 2018 – Silent Installation

This section refers mainly to system administrators who want to automate the install procedure of DDB/DDBSP. The DDBSP setup is based on MSI. The EXE Bootstrapper supports all *msiexec* command-line options.

3.1 Silent Install

For an automated installation some properties can be specified in the command line.

The following properties are supported:

- **LICENSE_AGREED**
For passive installations set the value to “1”. Otherwise the installation will fail.
- **DDBPTH**
This is the installation folder for the public DDB files. The default value is the sub-folder “DDB\” of APPDIR.
- **DDBPRV**
This is the folder for private DDB files. A user must have write access to this folder in order to enter private experimental or component data. The default value is the sub-folder “DDBST GmbH\DDBSP2018\DDBPRV\” of the global application data folder.
- **DDBSCR**
This is the folder for temporary files. A user must have write access to this folder. If the value is empty %TEMP% is used. The default value is empty.

- **DOINSTALLNCI**
If *Artist Structure* is part of the setup an optional structure database can be installed. The installation is optional because the file size is about 225 MB. Set the value to “0” to have the database *not* installed. The default is to install the database.
- **APPDIR**
This is the complete path to the target folder for the program files. The default value is “%ProgramFiles(x86)%\DDBST GmbH\DDPSP 2018”.
- **CREATE_DESKTOP_SH**
Set the value to “0” to *not* create a shortcut to the start menu folder on the desktop. The default is to create a shortcut on the desktop.
- **ASP_CONFIDENT**
The contents of this variable is written as comment on top of each Aspen-INP file created by DDBSP. To get multi-line text the occurrence of “\r” will be handled as line break. The default value is empty.
- **ASP_PURE**
This variable contains the Aspen PURE databases which are used in Aspen-INP export. The entries have to be separated by semicolon. The default value is “PURE;INORGANIC;AQUEOUS”.
- **DEMO_PRV_TEXT**
The contents of this variable will be displayed in the data set text output of private data sets that do not contain any data point. The default value is empty.
- **RLM_SERVER**
This variable holds the license server location. It can either be specified by the IP address (IPv4) or by the name of the server computer. The default value is empty.
- **RLM_PORT**
This variable can be used to specify the port for the communication between client and license server. The default value is empty.
- **VIEWREADME**
Set this variable to “” to *disable* the option to display the changes document in the *Completed* dialog.
- **RUNAPPLICATION**
Set this variable to “” to *disable* the option to run the DDBSPJumpStart program in the *Completed* dialog.

Example

DDB/DDBSP is installed with

- public and private database folder and temporary folder as sub-folder of “C:\DDBSP”
- default installation folder for the program files, create shortcuts to the start menu folder on the desktop
- not installing the NCI structure database
- use “myservr” as license server on port 34521
- a multi-line Aspen-INP header and the Aspen PURE databases PURE34, INORGANIC and AQUEOUS

The silent installation is started using the following program call:

```
MainSetup2018.exe /passive LICENSE_AGREED="1" DDBPTH="C:\DDBSP\DDB\  
DDBPRV="C:\DDBSP\PRIVATE\  
DDBSCR="C:\DDBSP\SCRATCH\  
DOINSTALLNCI="0"  
RLM_SERVER="myserver" RLM_PORT="34521"  
ASP_CONFIDENT="Note: This file contains\rConfidential Information."  
ASP_PURE="PURE34;INORGANIC;AQUEOUS"
```